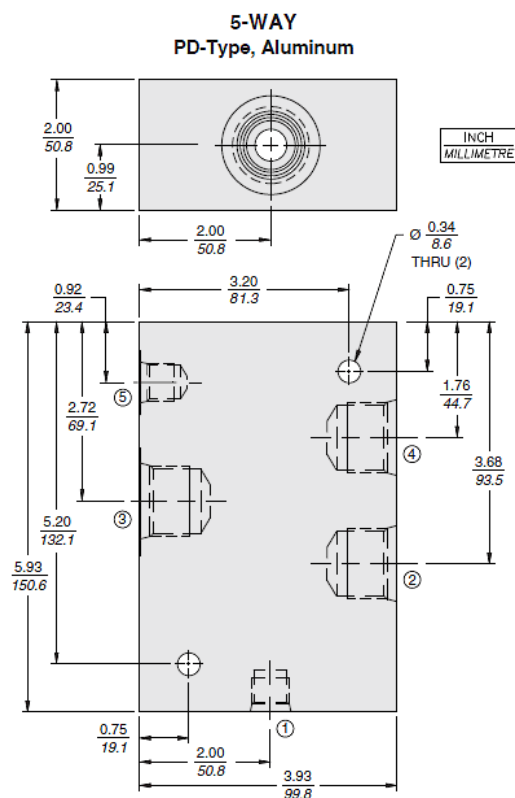




## Ratings

Pressure rating	207 bar (3000 psi)	- Note:
	Aluminum	
	345 bar (5000 psi)	- Note:
	Ductile iron	
Material	6061-T6511	- Note:
	Aluminum	
	Dura-bar	- Note: Ductile iron

## Dimensions



## Part Numbers

**CAVITY:** VC12-S5

P/N: 7029900	Code: 10T	Material: ALUMINUM			
Port 1	Port 2	Port 3	Port 4	Port 5	Port 6
SAE 6	SAE 10	SAE 10	SAE 10	SAE 6	

NOTE: PD STYLE BODY, SAE 6 PORT 1