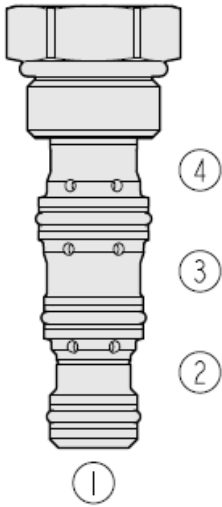




Overview



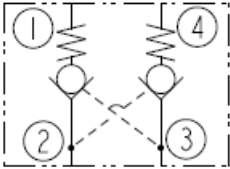
Description

The DC08-41 is a cartridge style, dual pilot operated check valve for use in blocking or load holding circuits with general purpose hydraulic fluids.

Features

- High pilot ratio for high ratio cylinders and rod-end load holding
- Can replace a counterbalance valve in some applications
- Hardened seat for long life and low leakage
- Low pressure drop
- Space saving: two PO checks in one 4-ported cartridge

Symbol



Ratings

Pressure Ratings

| | |
|-----------------|---------------------|
| Pressure rating | 241 bar (3500 psi) |
| Proof pressure | 350 bar (5075 psi) |
| Burst pressure | 966 bar (14000 psi) |
| Pilot ratio | 5:1 |

Flow Ratings

| | |
|--------------------------|--|
| Flow rating | See graphs |
| Maximum internal leakage | 0.25 ml/min (5 drops/min) - Note: Max at 207 bar (3500 psi) |

Temperature Ratings

| | | |
|-----------------------------|-------------------------------|--|
| Operating fluid temperature | -40 to 100 °C (-40 to 212 °F) | - Note: With buna N seals |
| | -26 to 204 °C (-15 to 400 °F) | - Note: With fluorocarbon seals |
| | -54 to 107 °C (-65 to 225 °F) | - Note: With polyurethane seals |
| Storage temperature | -40 to 70 °C (-40 to 160 °F) | |
| Ambient temperature | -40 to 90 °C (-40 to 194 °F) | |

Operating Parameters

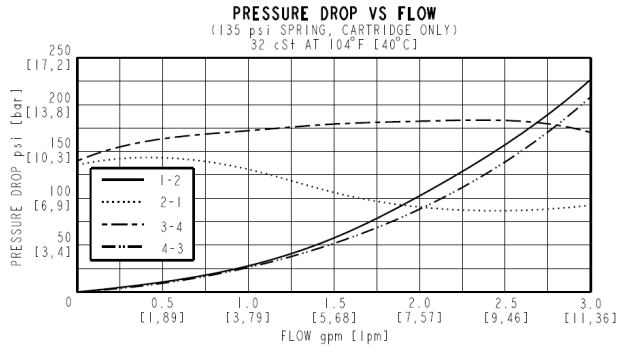
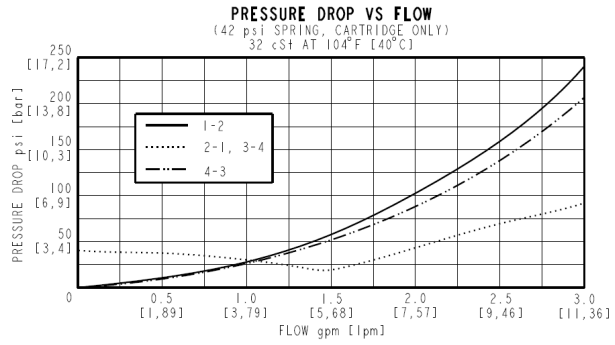
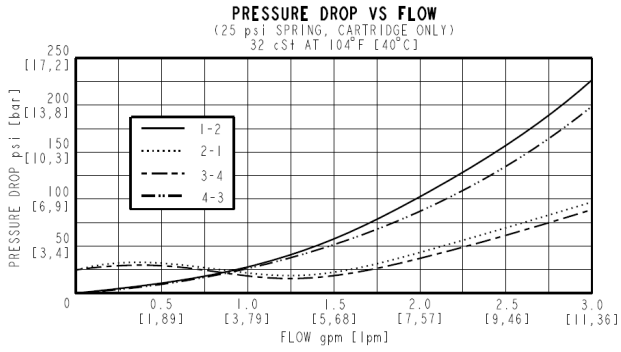
| | |
|---------------------------------------|--|
| Fluids | Mineral based or synthetic hydraulic fluid with lubricating properties |
| Fluid viscosity range | 7.4 to 420 cSt |
| Maximum operating contamination level | 20/18/14 per ISO 4406 |

Properties

| | |
|------------------------------|---|
| Unit weight | 0.07 kg (0.16 lb) |
| Internal wetted surface area | 110 cm ² (17 in ²) |



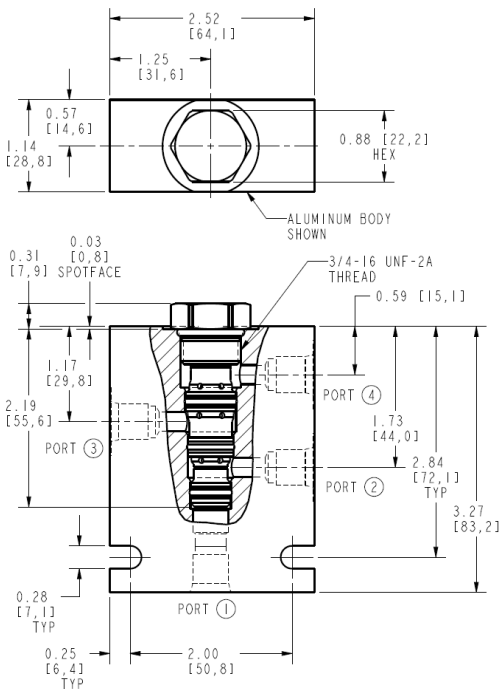
Performance



Dimensions

INCH
[mm]

OUTLINE



ALL DIMENSIONS ARE FOR REFERENCE ONLY.

Installation Specifications

| | |
|-------------------------------|-----------------------------------|
| Cavity | VC08-4 |
| Cartridge installation torque | 25.8 to 28.6 N-m (19 to 21 ft-lb) |
| Maximum allowable torque | 54.2 N-m (40 ft-lb) |
| Orientation restriction | None |



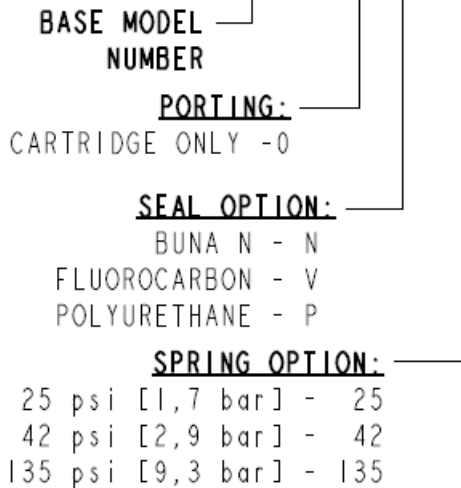
Accessories

| | | |
|----------|-------------|-----------------------------|
| Seal kit | SK08-4N-000 | - Note: Buna N |
| | SK08-4V-MMM | - Note: Fluorocarbon |
| | SK08-4U-000 | - Note: Polyurethane |

Order Code

ORDERING INFORMATION:

DC08-41-X-X-XXX



Model Options

DC08-41-H-J-R

H Line Body

| CODE | DESCRIPTION |
|------|----------------------------|
| 0 | No Body |
| 6T | Aluminum SAE 6 |
| 6TD | Ductile Iron SAE 6 |
| 3B | Aluminum BSPP 3/8" (3) |
| 3BD | Ductile Iron BSPP 3/8" (3) |

J Seal

| CODE | DESCRIPTION |
|------|--------------|
| N | Buna-N |
| V | Fluorocarbon |
| P | Polyurethane |

R Spring

| CODE | DESCRIPTION |
|------|---------------------|
| 25 | 25 psi Bias Spring |
| 42 | 42 psi Bias Spring |
| 135 | 135 psi Bias Spring |