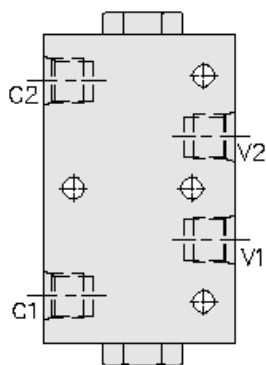
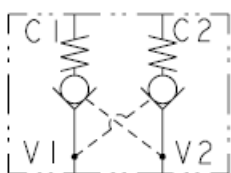




Overview



Symbol



Description

The DCV08 is a double pilot operated, hydraulic check valve for use in blocking or load holding circuits.

Operation

The valve allows flow from "V" ports to "C" ports, while normally blocking flow in the opposite direction. Flow will be allowed from "C" to "V" when pressure is applied to the opposite side "V" port. The valve has 4:1 pilot ratio, so at least 25% of the load pressure held at either "C" port is required at the opposite "V" port to open the flow passage.

Features

- Hardened seat for long life and low leakage.
- Optional sealed piston.
- Optional spring ranges.
- Low pressure drop.
- Check section is serviceable as a cartridge.

Ratings

Pressure Ratings

Pressure rating	241 bar (3500 psi)	
Pilot ratio	4:1	
Check valve spring value	1.7 bar (25 psi)	- Note: Standard for seal codes "N" and "V"
	6.9 bar (100 psi)	- Note: Standard for seal codes "NS" and "VS" (sealed options)

Temperature Ratings

Operating fluid temperature	-40 to 120 °C (-40 to 248 °F)
-----------------------------	-------------------------------

Flow Ratings

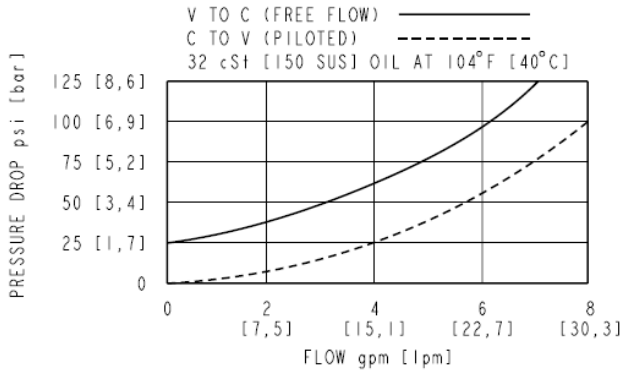
Maximum internal leakage	0.25 ml/min (5 drops/min)	- Note: C to V at 241 bar (3500 psi)
	328 ml/min (20 in ³ /min)	- Note: V1 to v2 without sealed piston at 241 bar (3500 psi)
Flow performance	See graph	

Properties

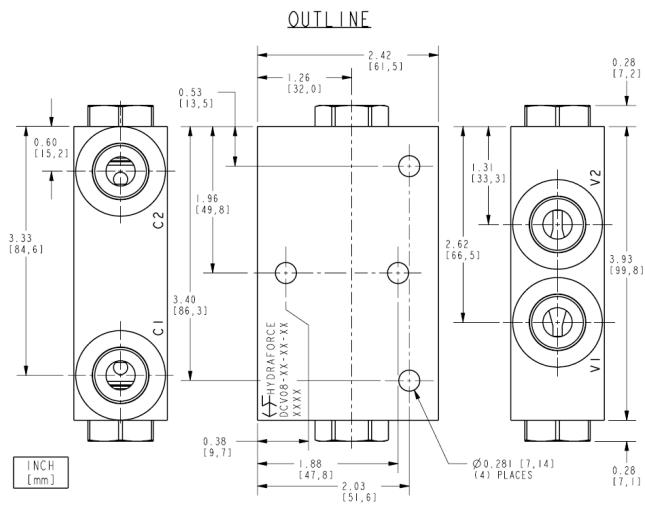
Materials	Body - anodized high strength aluminum alloy. Cartridges - steel with hardened work surfaces and zinc plated exposed surfaces. Pilot piston - hardened steel
Unit weight	0.57 kg (1.25 lb)



Performance



Dimensions



Accessories

- | | | |
|----------|-----------|---------------|
| Seal kit | SK08-2N-T | - Note: Buna |
| | SK08-2V-T | - Note: Viton |



Order Code

DCV08-XX-XX-XXX	
PORTING CODE	CHECK VALVE SPRING CODE
1/4-18 NPTF - 2P	BLANK - 25 psi [1,7 bar] ("N" AND "V")
3/8-18 NPTF - 3P	BLANK - 100 psi [6,9 bar] ("NS" AND "VS")
1/4 BSP - 2B	60 - 60 psi [4,1 bar] ("N" AND "V")
3/8 BSP - 3B	80 - 80 psi [5,5 bar] ("N" AND "V")
SAE 6 - 6T	100 - 100 psi [6,9 bar] ("N" AND "V")
SAE 8 - 8T	150 - 150 psi [10,3 bar] ("N", "V", "NS" AND "VS")
SEAL CODE	200 - 200 psi [13,8 bar] ("N", "V", "NS" AND "VS")
BUNA N - N	270 - 270 psi [16,8 bar] ("N", "V", "NS" AND "VS")
VITON - V	
BUNA N WITH SEALED PISTON - NS	
VITON WITH SEALED PISTON - VS	

NOTES:
 1. 25 psi [1,7 bar] MINIMUM ALLOWABLE CHECK VALVE SPRING VALUE FOR SEAL CODES "N" AND "V".
 2. 100 psi [6,9 bar] MINIMUM ALLOWABLE CHECK VALVE SPRING VALUE FOR SEAL CODES "NS" AND "VS".

Model Options

DCV08-H-J-R

H Porting

CODE	DESCRIPTION
2P	1/4-18 NPTF
3P	3/8-18 NPTF
2B	1/4 BSP
3B	3/8 BSP
6T	SAE 6
8T	SAE 8

J Seal

CODE	DESCRIPTION
N	Buna N
V	Viton
BS	Buna with sealed piston
VS	Viton with sealed piston

R Spring

CODE	DESCRIPTION
BLANK	25 psi (N and V)
BLANK	100 psi (NS and VS)
60	60 psi (N and V)
80	80 psi (N and V)
100	100 psi (N and V)
150	150 psi (NS and VS)
200	200 psi (NS and VS)
270	270 psi (NS and VS)