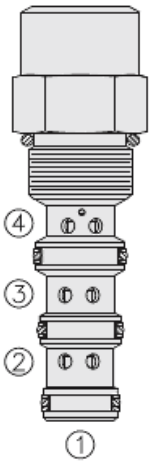




## Overview



### Description

EC10-43 is a screw-in, cartridge style, priority on demand pressure compensator valve with dynamic load sense. It is intended to provide priority flow in required amount, while allowing excessive flow to be used for auxiliary functions.

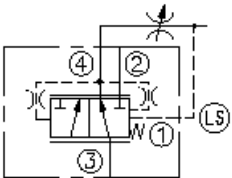
### Operation

With inlet flow at port 3, the EC10-43 will deliver required priority flow at port 4 regardless of load pressure. Excessive flow exits at port 2 and port 1 is the load sense port. All ports may be fully pressurized.

### Features

- Priority-on-demand.
- Dynamic load sense.
- Hardened parts for long life.
- Quiet, modulated response.
- Industry-common cavity.

## Symbol



## Ratings

### Pressure Ratings

Pressure rating	241 bar (3500 psi)
Proof pressure	345 bar (5000 psi)
Burst pressure	1034 bar (15000 psi)

### Flow Ratings

Inlet flow rating	45 lpm (12.0 gpm)	- <b>Note:</b> Maximum
Priority flow rating	27 lpm (7.0 gpm)	- <b>Note:</b> With 5.5 bar (80 psi) compensating spring
	34 lpm (9.0 gpm)	- <b>Note:</b> With 10.3 bar (150 psi) compensating spring

### Temperature Ratings

Operating fluid temperature	-40 to 100 °C (-40 to 212 °F)	- <b>Note:</b> With buna N seals
	-26 to 204 °C (-15 to 400 °F)	- <b>Note:</b> With fluorocarbon seals
Storage temperature	-40 to 70 °C (-40 to 160 °F)	
Ambient temperature	-40 to 70 °C (-40 to 160 °F)	

### Other Ratings

Corrosion protection	960 hr salt spray per ASTM b117 (model number - gec10-43)
----------------------	---

## Operating Parameters

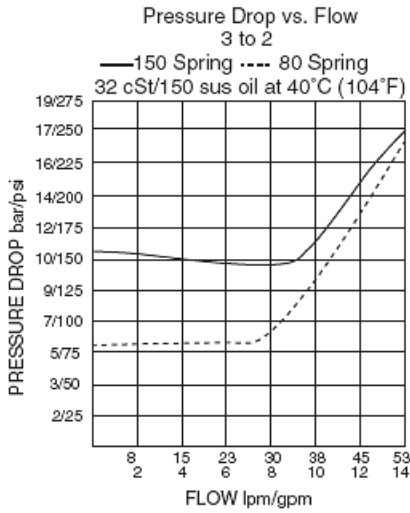
Fluids	Mineral based or synthetic hydraulic fluid with lubricating properties
Fluid viscosity range	7.4 to 420 cSt
Maximum operating contamination level	18/16/13 per ISO 4406

## Properties

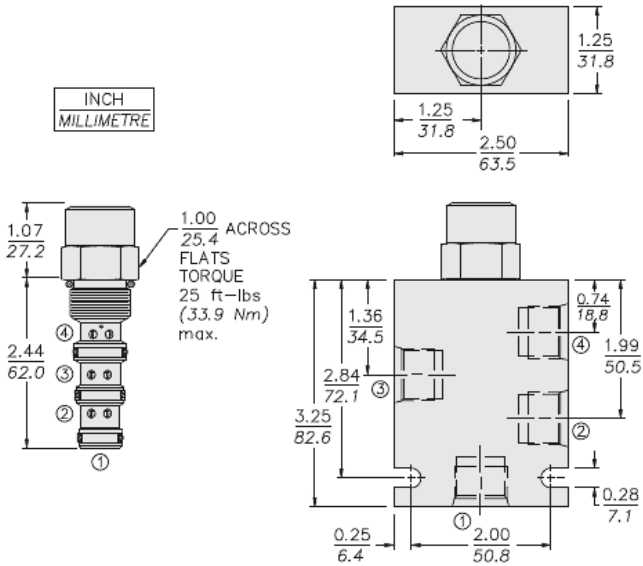
Unit weight	0.18 kg (0.40 lb)
Internal wetted surface area	178 cm <sup>2</sup> (27.6 in <sup>2</sup> )



## Performance



## Dimensions



## Installation Specifications

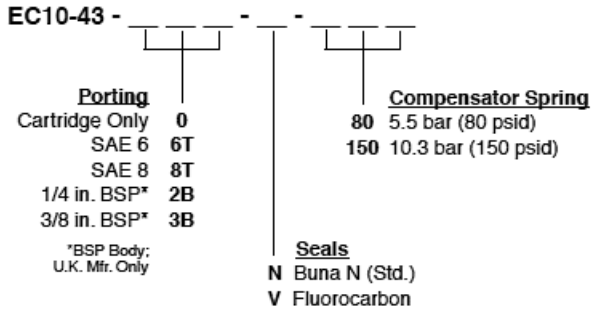
Cavity	VC10-4
Cartridge installation torque	33 to 35 N-m (24 to 26 ft-lb)
Maximum allowable torque	67.8 N-m (50 ft-lb)
Orientation restriction	None

## Accessories

Seal kit	SK10-4X-MMM	- <b>Note:</b> X = seal option
----------	-------------	--------------------------------



**Order Code**



**Model Options**

**EC10-43-H-J-R**

**H Line Body**

CODE	DESCRIPTION
0	No Body
6T	Aluminum SAE 6
8T	Aluminum SAE 8
6TD	Ductile Iron SAE 6

**J Seal**

CODE	DESCRIPTION
N	Buna-N
V	Fluorocarbon
P	Polyurethane
U	PPDI Urethane

**R Compensator Spring**

CODE	DESCRIPTION
80	80 Compensator Spring
150	150 Compensator Spring