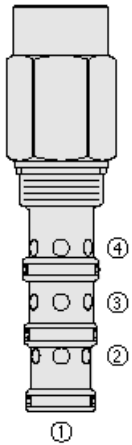




## Overview



### Description

EC42-M42 is a screw-in, cartridge style, priority on demand pressure compensator with static load sense, intended to provide priority flow in required amount, while allowing excessive flow to be used for auxiliary functions.

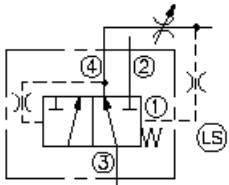
### Operation

With inlet flow at port 3, port 4 will deliver required priority flow regardless of load pressure. Excessive flow exits at port 2. Port 1 is the load sense port. All ports may be fully pressurized.

### Features

- Hardened parts for long life.
- Quiet, modulated response.
- Industry-common cavity.

## Symbol



## Ratings

### Pressure Ratings

Pressure rating	241 bar (3500 psi)
Proof pressure	345 bar (5000 psi)
Burst pressure	896 bar (15000 psi)

### Flow Ratings

Inlet flow rating	303 lpm (80 gpm)	
Priority flow rating	246 lpm (65 gpm)	- <b>Note:</b> Maximum, with spring 15 bar (220 psi)
	208 lpm (55 gpm)	- <b>Note:</b> Maximum, with spring 10 bar (150 psi)
	170 lpm (45 gpm)	- <b>Note:</b> Maximum, with spring 7.6 bar (110 psi)
	151 lpm (40 gpm)	- <b>Note:</b> Maximum, with spring 5.5 bar (80 psi)

### Temperature Ratings

Operating fluid temperature	-40 to 120 °C (-40 to 250 °F)	- <b>Note:</b> With buna N seals
	-26 to 204 °C (-15 to 400 °F)	- <b>Note:</b> With fluorocarbon seals
	-54 to 107 °C (-65 to 225 °F)	- <b>Note:</b> With polyurethane seals
Storage temperature	-40 to 70 °C (-40 to 160 °F)	
Ambient temperature	-40 to 70 °C (-40 to 160 °F)	

## Operating Parameters

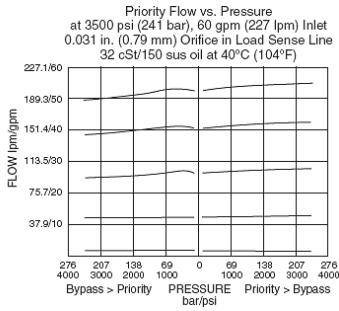
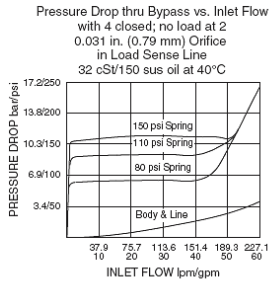
Fluids	Mineral based or synthetic hydraulic fluid with lubricating properties
Fluid viscosity range	7.4 to 400 cSt
Maximum operating contamination level	18/16/13 per ISO 4406

## Properties

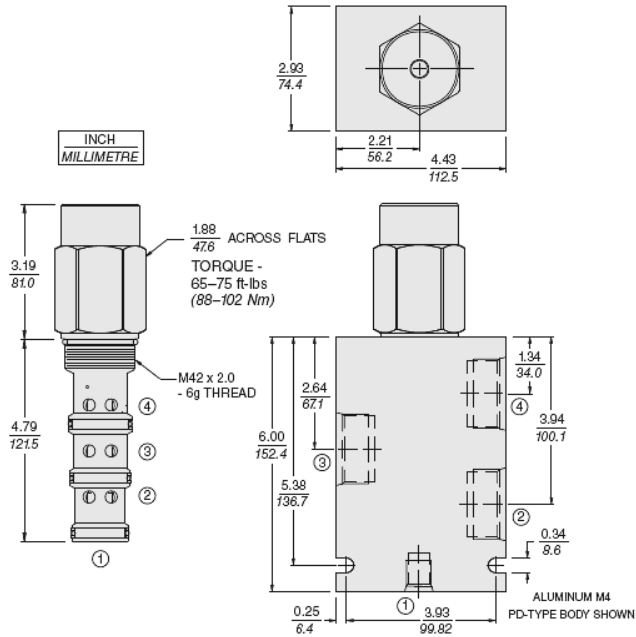
Unit weight	1.56 kg (3.44 lb)
Internal wetted surface area	738.1 cm <sup>2</sup> (114.4 in <sup>2</sup> )



## Performance



## Dimensions



## Installation Specifications

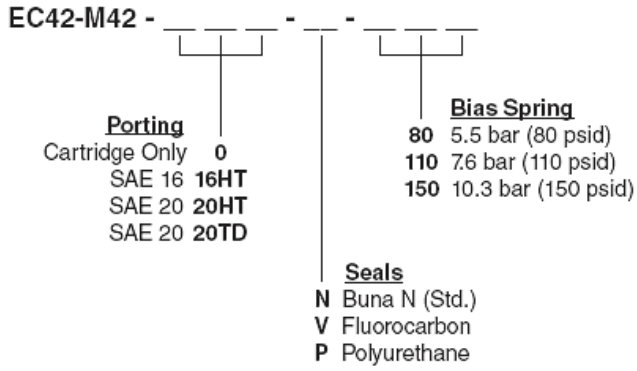
Cavity	VC42-M4
Cartridge installation torque	88 to 102 N-m (65 to 75 ft-lb)
Orientation restriction	None

## Accessories

Seal kit	SK42-4X-MMM	- Note: X = seal option
----------	-------------	-------------------------



**Order Code**



**Model Options**

**EC42-M42-H-J-R**

**H Line Body**

CODE	DESCRIPTION
0	No Body
16T	Aluminum SAE 16
20T	Aluminum SAE 20

**J Seal**

CODE	DESCRIPTION
N	Buna-N
V	Fluorocarbon
P	Polyurethane
U	PPDI Urethane

**R Compensator Spring**

CODE	DESCRIPTION
80	80 Compensator Spring
110	110 Compensator Spring
150	150 Compensator Spring
220	220 Compensator Spring