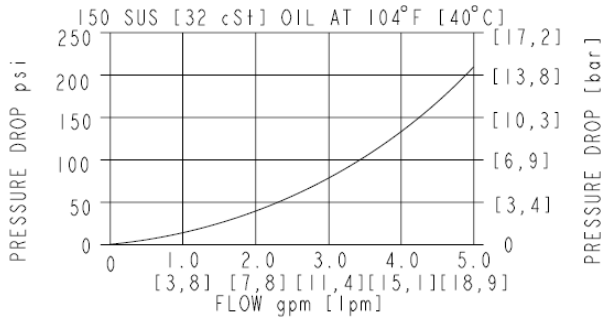
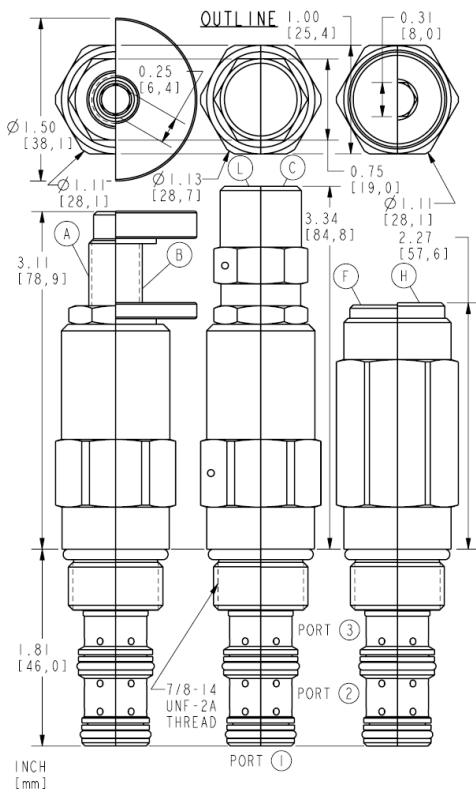




Performance



Dimensions



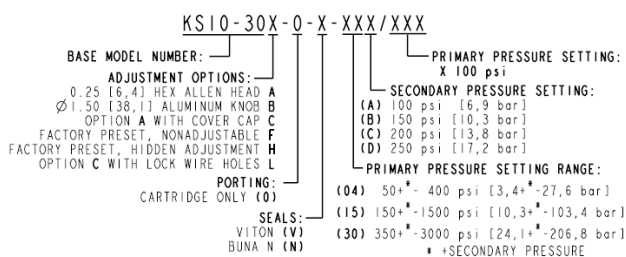
Installation Specifications

Cavity	VC10-3
Cartridge installation torque	27.1 to 32.5 N-m (20 to 24 ft-lb)
H style plug torque	33.9 N-m (25 ft-lb)

Accessories

Seal kit	SK10-3N-BB	- Note: Buna N
	SK10-3V-BB	- Note: Viton

Order Code



Model Options



KS10-30F-H-J-R/S

F Adjustment Option

CODE	DESCRIPTION
A	1/4" Hex Allen Head
B	1-1/2" Diameter Aluminum Knob with Aluminum Lock Knob
C	1/4" Hex Allen Head with Cover Cap
F	Factory Preset Non-Adjustable
H	Factory Preset Hidden Adjustment
L	1/4" Hex Allen Head with Cover Cap and Lockwire Holes

H Line Body

CODE	DESCRIPTION
0	No Body
6T	Aluminum SAE 6
8T	Aluminum SAE 8
6TD	Ductile Iron SAE 6
8TD	Ductile Iron SAE 8
3B	Aluminum BSPP 3/8" (3)
3BD	Ductile Iron BSPP 3/8" (3)

J Seal

CODE	DESCRIPTION
N	Buna-N
V	Fluorocarbon
P	Polyurethane
U	PPDI Urethane

R Spring

CODE	DESCRIPTION
04A	3.4 to 27.6 bar (50 to 400 psi) Spring Range
04B	3.4 to 27.6 bar (50 to 400 psi) Spring Range
04C	3.4 to 27.6 bar (50 to 400 psi) Spring Range
04D	3.4 to 27.6 bar (50 to 400 psi) Spring Range
15A	10.3 to 103.4 bar (150 to 1500 psi) Spring Range
15B	10.3 to 103.4 bar (150 to 1500 psi) Spring Range
15C	10.3 to 103.4 bar (150 to 1500 psi) Spring Range
15D	10.3 to 103.4 bar (150 to 1500 psi) Spring Range
30A	24.1 to 206.8 bar (350 to 3000 psi) Spring Range
30B	24.1 to 206.8 bar (350 to 3000 psi) Spring Range
30C	24.1 to 206.8 bar (350 to 3000 psi) Spring Range
30D	24.1 to 206.8 bar (350 to 3000 psi) Spring Range

S Setting



CODE	DESCRIPTION
MXXX	Spring Setting in XXX bar
XX	Spring Setting in XX psi (x 100)