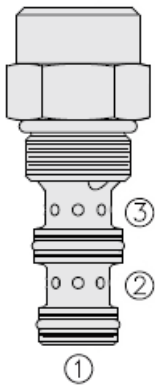




Overview



Description

The PD08-35 is a screw-in, cartridge style, pilot-operated, spool type, normally open, hydraulic directional valve.

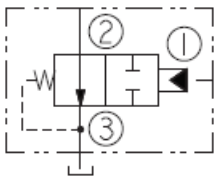
Operation

In neutral position the valve allows flow from port 2 to 3. The spring bias chamber is internally vented to port 3. On remote pilot signal at port 1, the valve's spool shifts to block flow from port 2 to 3. Pressure on port 3 will directly (1:1) affect the pilot pressure required and must be added to the bias spring value.

Features

- External vent-to-atmosphere.
- Range of bias springs available.
- Sealed spool option for bias spring options 110.
- Hardened spool and cage for long life.
- Industry common cavity.

Symbol



Ratings

Pressure Ratings

Pressure rating 241 bar (3500 psi)

Flow Ratings

Flow rating 8.9 lpm (5 gpm)
 Maximum internal leakage 65 ml/min (4 in³/min) - **Note:** At 241 bar (3500 psi)
 0 lpm (0 gpm) - **Note:** From port 1 to 2 with sealed spool

Temperature Ratings

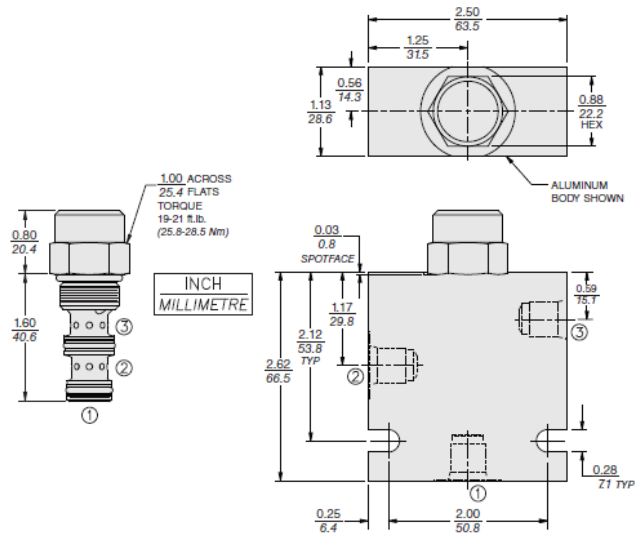
Operating fluid temperature -40 to 100 °C (-40 to 212 °F) - **Note:** With buna N seals
 -26 to 204 °C (-15 to 400 °F) - **Note:** With fluorocarbon seals
 -54 to 107 °C (-65 to 225 °F) - **Note:** With polyurethane seals
 Storage temperature -40 to 70 °C (-40 to 160 °F)
 Ambient temperature -40 to 90 °C (-40 to 194 °F)

Properties

Unit weight 0.10 kg (0.22 lb)
 Internal wetted surface area 103 cm² (16.0 in²)



Dimensions



Installation Specifications

Cavity	VC08-3
Cartridge installation torque	25.8 to 28.5 N-m (19 to 21 ft-lb)
Maximum allowable torque	47.6 N-m (35 ft-lb)
Orientation restriction	None

Accessories

Seal kit	SK08-3X-MM	- Note: X = seal option
----------	------------	--------------------------------



Order Code

PD08-35 - - -

<p>Porting</p> <p>Cartridge Only 0</p> <p>SAE 4 4T</p> <p>SAE 6 6T</p> <p>SAE 6 6TD</p> <p>SAE 8 8TD</p> <p>1/4 in. BSP* 2B</p> <p>3/8 in. BSP* 3B</p> <p>3/8 in. BSP* 3BD</p> <p><small>*BSP Body U.K. Mfr. Only</small></p>	<p>Bias Spring[†]</p> <p>20 1.4 bar (20 psi)</p> <p>40 2.8 bar (40 psi)</p> <p>60 4.1 bar (60 psi)</p> <p>110 7.6 bar (110 psi)</p> <p>170 11.7 bar (170 psi)</p> <p><small>*Note: 110 psi bias spring is the minimum required for use with sealed spool.</small></p> <p>Seals</p> <p>N Buna N (Std.)</p> <p>NS* Buna N with Sealed Spool</p> <p>V Fluorocarbon</p> <p>VS* Fluorocarbon with Sealed Spool</p> <p>P Polyurethane</p> <p>VS* Polyurethane with Sealed Spool</p> <p><small>*Note: 110 psi bias spring is the minimum required for use with sealed spool.</small></p>
--	---

Model Options

PD10-35-H-J-R

H Line Body

CODE	DESCRIPTION
0	No Body
4T	Aluminum SAE 4
6T	Aluminum SAE 6
6TD	Ductile Iron SAE 6
8TD	Ductile Iron SAE 8
3B	Aluminum BSPP 3/8" (3)
3BD	Ductile Iron BSPP 3/8" (3)

J Seal

CODE	DESCRIPTION
N	Buna-N
NS	Buna-N with a Sealed Spool
V	Fluorocarbon
VS	Fluorocarbon with a Sealed Spool
P	Polyurethane
PS	Polyurethane with a Sealed Spool
U	PPDI Urethane
US	PPDI Urethane with a Sealed Spool

R Spring

CODE	DESCRIPTION
20	20 psi Bias Spring
40	40 psi Bias Spring
60	60 psi Bias Spring
110	110 psi Bias Spring
170	170 psi Bias Spring