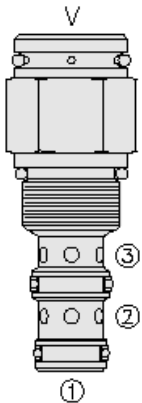




## Overview



### Description

The PD10-30 is a screw-in, cartridge style, pilot-operated, spool type, normally open, hydraulic directional valve.

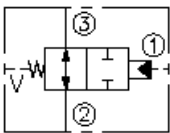
### Operation

In neutral position the valve allows flow from port 3 to 2 bi-directionally. The spring chamber is vented to atmosphere "v" which is internally o-ring sealed from the cartridge flow paths. On remote pilot signal at port 1, the valve's spool shifts to block flow from port 3 to 2. Because of the vented spring chamber, the cartridge may be fully pressurized at any port without affecting required pilot pressure.

### Features

- Hardened spool and cage for long life.
- Industry common cavity.

## Symbol



## Ratings

### Pressure Ratings

Pressure rating 241 bar (3500 psi)

### Flow Ratings

Flow rating 38 lpm (10 gpm)

Maximum internal leakage 82 ml/min (5 in<sup>3</sup>/min) - **Note:** From port 1 and 2 and from port 2 and 3 (when piloted), at 207 bar (3500 psi)  
0 lpm (0 gpm) - **Note:** Port 1 and 2 with sealed spool

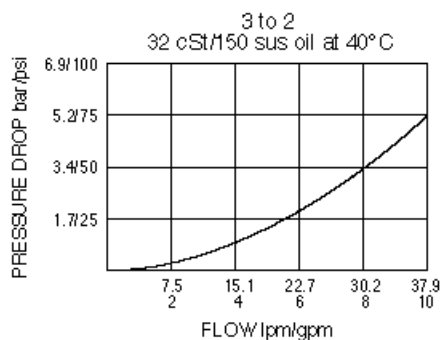
### Temperature Ratings

Operating fluid temperature -40 to 120 °C (-40 to 248 °F)

## Properties

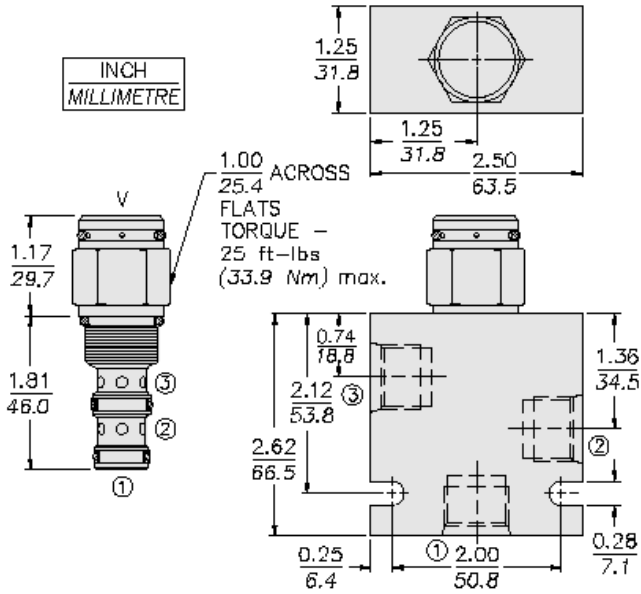
Materials steel with work surfaces hardened. External surfaces are zinc plated  
Unit weight 0.15 kg (0.34 lb)

## Performance





Dimensions



Accessories

Seal kit	SK10-3N-MM	- <b>Note:</b> Buna N
	SK10-3V-MM	- <b>Note:</b> Viton
	SK10-3P-MM	- <b>Note:</b> Polyurethane

Order Code

PD10-30 -

<b>Porting</b>		<b>Bias Spring<sup>†</sup></b>
Cartridge Only	<b>0</b>	<b>40</b> 2.8 bar (40 psi)
SAE 6	<b>6T</b>	<b>60</b> 4.1 bar (60 psi)
SAE 8	<b>8T</b>	<b>110</b> 7.6 bar (110 psi)
1/4 in. BSP*	<b>2B</b>	<b>170</b> 11.7 bar (170 psi)
3/8 in. BSP*	<b>3B</b>	
*BSP Body U.K. Mfr. Only		
<b>Seals</b>		<sup>†</sup> Note: 110 psi bias spring is the minimum required for use with sealed spool.
Buna N (Std.)	<b>N</b>	
Buna N with Sealed Spool	<b>NS</b>	
Fluorocarbon	<b>V</b>	
Fluorocarbon with Sealed Spool	<b>VS</b>	

Model Options

PD10-30C-H-J-R

C Tall Cap

CODE	DESCRIPTION
BLANK	Standard Cap
T	Tall Cap

H Line Body

CODE	DESCRIPTION
0	No Body
6T	Aluminum SAE 6
8T	Aluminum SAE 8
6TD	Ductile Iron SAE 6
8TD	Ductile Iron SAE 8
3B	Aluminum BSPP 3/8" (3)



CODE	DESCRIPTION
3BD	Ductile Iron BSPP 3/8" (3)

### J Seal

CODE	DESCRIPTION
N	Buna-N
NS	Buna-N with a Sealed Spool
V	Fluorocarbon
VS	Fluorocarbon with a Sealed Spool
P	Polyurethane
PS	Polyurethane with a Sealed Spool
U	PPDI Urethane
US	PPDI Urethane with a Sealed Spool

### R Spring

CODE	DESCRIPTION
40	40 psi Bias Spring
60	60 psi Bias Spring
110	110 psi Bias Spring
130	130 psi Bias Spring
170	170 psi Bias Spring
M14.0	14 bar Bias Spring
M15.0	15 bar Bias Spring