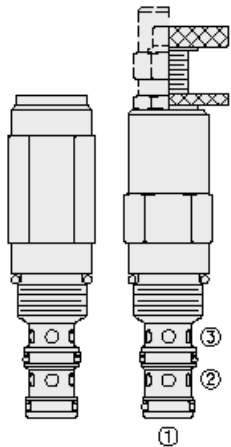




Overview



Description

PS10-32 is a screw-in, cartridge style, direct-acting, spool-type, hydraulic sequence valve with external pilot and internal spring chamber drain, designed to direct flow to a secondary circuit once a predetermined pressure level is attained in the primary circuit.

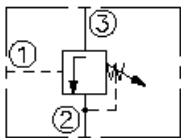
Operation

In its steady state, the PS10-32X blocks flow from port 3 to port 2. On attainment of a pre-determined pressure at port 1, the cartridge shifts to open port 3 to port 2. Since the spring chamber is vented at port 2, back pressure at port 2 will directly (1:1) affect the valve's setting.

Features

- Adjustments cannot be backed out of the valve.
- Adjustments prohibit springs from going solid.
- Optional spring ranges to 144.8 bar (2100 psi).
- Hardened spool and cage for long life.
- Industry-common size.

Symbol



Ratings

Pressure Ratings

Pressure rating	206.8 bar (3000 psi)
Proof pressure	482.6 bar (7000 psi)
Burst pressure	688.5 bar (14000 psi)
Crack pressure defined	Pressure evident at 0.95 lpm (0.25 gpm) attained port 1 to port 2

Flow Ratings

Flow rating	30.3 lpm (8 gpm)
Maximum internal leakage	82 ml/min (5 in ³ /min) - Note: At \hat{P} 2 to 3 206.8 bar (3000 psi)

Temperature Ratings

Operating fluid temperature	-40 to 100 °C (-40 to 212 °F)	- Note: With buna N seals
	-26 to 204 °C (-15 to 400 °F)	- Note: With fluorocarbon seals
Storage temperature	-40 to 70 °C (-40 to 160 °F)	
Ambient temperature	-40 to 70 °C (-40 to 160 °F)	

Operating Parameters

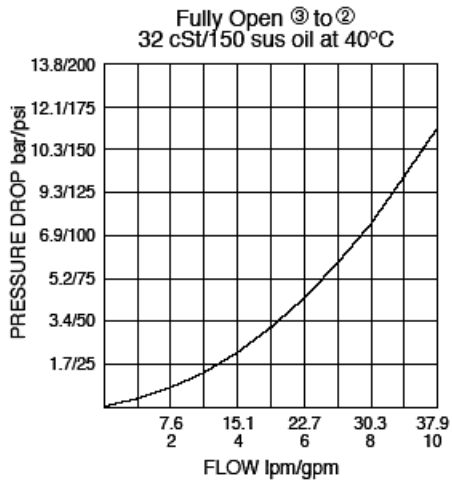
Fluids	Mineral based or synthetic with lubricating properties
Fluid viscosity range	7.4 to 420 cSt
Maximum operating contamination level	18/16/13 per ISO 4406

Properties

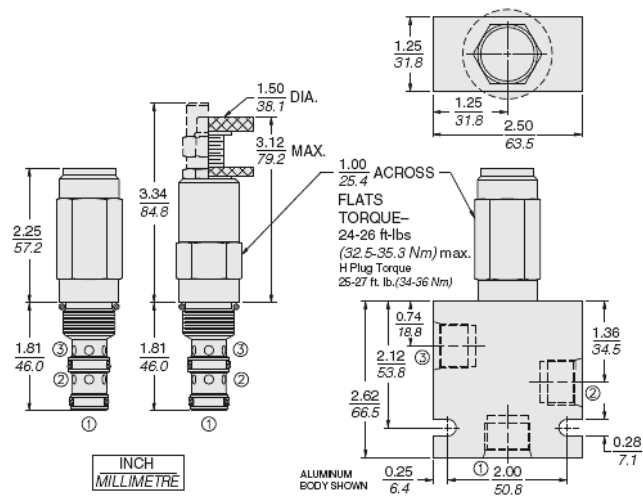
Unit weight	0.25 kg (0.56 lb)	- Note: PS10-32A
	0.29 kg (0.65 lb)	- Note: PS10-32C PS10-32L
	0.28 kg (0.61 lb)	- Note: PS10-32B
	0.24 kg (0.54 lb)	- Note: PS10-32F PS10-32H
	Internal wetted surface area	148 cm ² (22.9 in ²)
	163 cm ² (25.2 in ²)	- Note: PS10-32F PS10-32H



Performance



Dimensions



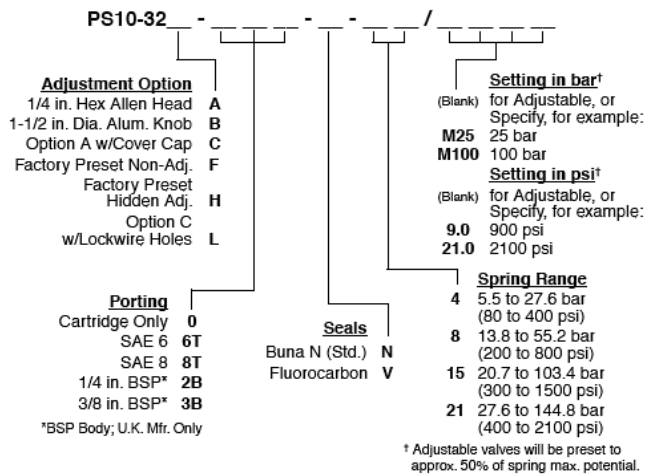
Installation Specifications

Cavity	VC10-3
Cartridge installation torque	32.5 to 35.3 N-m (24 to 26 ft-lb)
H style plug torque	33.9 N-m (23 to 25 ft-lb)
Maximum allowable torque	33.9 N-m (25 ft-lb)
Orientation restriction	None

Accessories

Seal kit	SK10-3X-TB	- Note: X=seal option
----------	------------	-----------------------

Order Code



Model Options

PS10-32F-H-J-R/S

F Adjustment Option

CODE	DESCRIPTION
A	1/4" Hex Allen Head
B	1-1/2" Diameter Aluminum Knob with Aluminum Lock Knob
C	1/4" Hex Allen Head with Cover Cap
F	Factory Preset Non-Adjustable
H	Factory Preset Hidden Adjustment
L	1/4" Hex Allen Head with Cover Cap and Lockwire Holes

H Line Body

CODE	DESCRIPTION
0	No Body
6T	Aluminum SAE 6
8T	Aluminum SAE 8
6TD	Ductile Iron SAE 6
8TD	Ductile Iron SAE 8
3B	Aluminum BSPP 3/8" (3)
3BD	Ductile Iron BSPP 3/8" (3)

J Seal

CODE	DESCRIPTION
N	Buna-N
V	Fluorocarbon
P	Polyurethane
U	PPDI Urethane

R Spring

CODE	DESCRIPTION
01	2.41 to 8.62 bar (35 to 125 psi) Spring Range
04	3.45 to 27.6 bar (50 to 400 psi) Spring Range
08	5.5 to 55.2 bar (80 to 800 psi) Spring Range
15	10.3 to 103.4 bar (150 to 1500 psi) Spring Range



CODE	DESCRIPTION
21	14.5 to 114.8 bar (210 to 2100 psi) Spring Range

S Setting

CODE	DESCRIPTION
MXXX	Spring Setting in XXX bar
XX	Spring Setting in XX psi (x 100)