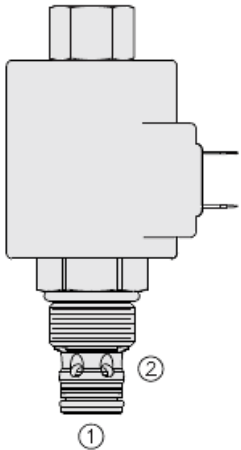




Overview



Description

The TS10-26X is a screw-in, cartridge style, pilot-operated, spool-type, relief valve which CAN be infinitely adjusted across a prescribed range using a variable electric current. The regulated pressure is proportional to the input electrical current.

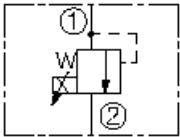
Operation

The TS10-26X blocks flow from port 1 to port 2 until sufficient pressure is present at port 1 to open the pilot section by offsetting the electrically induced solenoid force. With no current applied, the valve will relieve at approximately 100 psi [6,9 bar].

Features

- 12 and 24 volt coils standard.
- Optional waterproof E-Coils rated up to IP69K.
- Industry common cavity.
- Optional manual override.

Symbol



Ratings

Pressure Ratings

Pressure rating	241.3 bar (3500 psi)	- Note: Port 1
	206.8 bar (3000 psi)	- Note: Port 2
Proof pressure	344.7 bar (4000 psi)	
Burst pressure	827.4 bar (12000 psi)	- Note: With coil assembled
Adjustable pressure range	6.9 to 206.8 bar (100 to 3000 psi)	- Note: Model code A
	6.9 to 158.6 bar (100 to 2300 psi)	- Note: Model code b
	6.9 to 117.2 bar (100 to 1700 psi)	- Note: Model code c

Flow Ratings

Flow rating	94.6 lpm (25 gpm)	- Note: At 1" P (cartridge only) port 1 to 2 (coil de-energized) 9.6 bar (190 psi)
Maximum pilot flow	0.76 lpm (0.2 gpm)	

Temperature Ratings

Operating fluid temperature	-40 to 100 °C (-40 to 212 °F)	- Note: With buna N seals
	-26 to 204 °C (-15 to 400 °F)	- Note: With fluorocarbon seals
	-54 to 107 °C (-65 to 225 °F)	- Note: With polyurethane seals
Storage temperature	-40 to 70 °C (-40 to 160 °F)	
Ambient temperature	-40 to 70 °C (-40 to 160 °F)	

Other Ratings

Corrosion protection	960 hr salt spray per ASTM b117
----------------------	---------------------------------

Operating Parameters

Fluids	Mineral based or synthetic with lubricating properties
Fluid viscosity range	7.4 to 420 cSt
Maximum operating contamination level	18/16/13 per ISO 4406

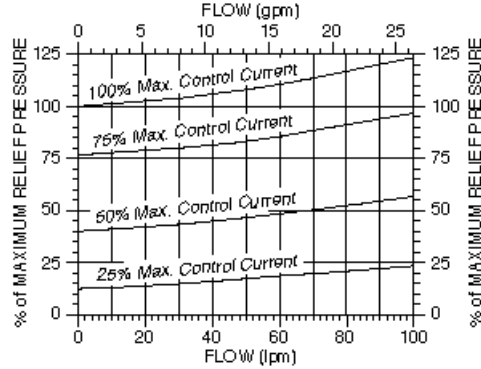
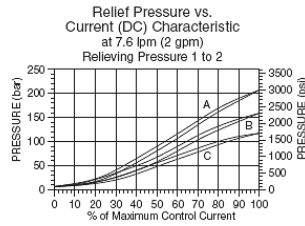
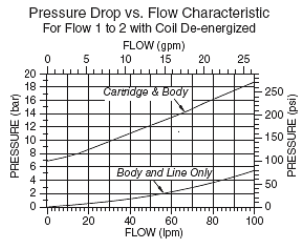


Properties

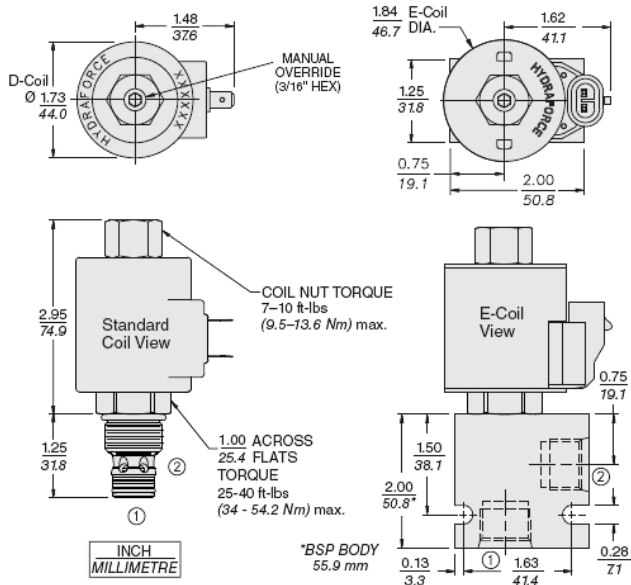
Unit weight	0.25 kg (0.55 lb)	
Internal wetted surface area	163 cm ² (25.2 in ²)	- Note: TS10-26X
	168 cm ² (26.1 in ²)	- Note: TS10-26XM

Performance

Typical Relief Pressure vs. Flow Characteristic
Typical Relieving Pressure ① to ②
at Various %'s of Maximum Control Current
Pressure Range "A" (207 bar/3000 psi); Cartridge in Body



Dimensions



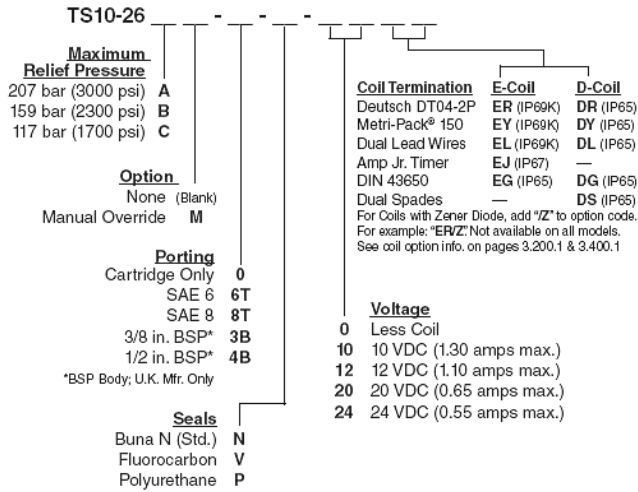
Installation Specifications

Cavity	VC10-2
Cartridge installation torque	34 to 36.7 N-m (25 to 27 ft-lb)
Maximum allowable torque	54.2 N-m (40 ft-lb)
Coil nut torque	9.5 to 13.6 N-m (7 to 10 ft-lb)
Orientation restriction	None

Accessories

Seal kit	SK10-2X-B	- Note: X = seal option
----------	-----------	--------------------------------

Order Code



Model Options

TS10-26DE-H-J-L

D Regulating Pressure Range

CODE	DESCRIPTION
A	6.9 to 206.8 bar (100 to 3000 psi) Pressure Range
B	6.9 to 158.6 bar (100 to 2300 psi) Pressure Range
C	6.9 to 117.2 bar (100 to 1700 psi) Pressure Range

E Manual Override

CODE	DESCRIPTION
BLANK	NONE
M	Minimum Regulated Pressure Override, 3/16" Internal Hex

H Line Body

CODE	DESCRIPTION
0	No Body
6T	Aluminum SAE 6
8T	Aluminum SAE 8
6TD	Ductile Iron SAE 6
8TD	Ductile Iron SAE 8
2B	Aluminum BSPP 1/4" (2)
3B	Aluminum BSPP 3/8" (3)
4B	Aluminum BSPP 1/2" (4)
4BD	Ductile Iron BSPP 1/2" (4)

J Seal

CODE	DESCRIPTION
N	Buna-N
V	Fluorocarbon
P	Polyurethane
U	PPDI Urethane

L Coil



CODE	DESCRIPTION
0	No Coil
10DG	10 VDC, D-Coil, DIN 43650
10DL	10 VDC, D-Coil, Dual Lead Wires
10DS	10 VDC, D-Coil, Dual Spade
10EL	10 VDC, E-Coil, Dual Lead Wires
10ER	10 VDC, E-Coil, Deutsch
12DG	12 VDC, D-Coil, DIN 43650
12DL	12 VDC, D-Coil, Dual Lead Wires, 18 inches long
12DL/36	12 VDC, D-Coil, Dual Lead Wires, 36 inches long
12DL/W	12 VDC, D-Coil, Dual Lead Wires with Weatherpak
12DR	12 VDC, D-Coil, Deutsch
12DS	12 VDC, D-Coil, Dual Spade
12EG	12 VDC, E-Coil, DIN 43650
12EJ	12 VDC, E-Coil, AMP Jr.
12EL	12 VDC, E-Coil, Dual Lead Wires, 18 inches long
12EL/36	12 VDC, E-Coil, Dual Lead Wires, 36 inches long
12ER	12 VDC, E-Coil, Deutsch
12EY	12 VDC, E-Coil, Metri-Pack 150
20DS	20 VDC, D-Coil, Dual Spade
20ER	20 VDC, E-Coil, Deutsch
24AG	24 VDC, D-Coil, DIN 43650
24AP	24 VDC, D-Coil, 1/2" Conduit and Dual Lead Wires
24DG	24 VDC, D-Coil, DIN 43650
24DL	24 VDC, D-Coil, Dual Lead Wires
24DL/W	24 VDC, D-Coil, Dual Lead Wires with Weatherpak
24DP	24 VDC, D-Coil, 1/2" Conduit and Dual Lead Wires
24DR	24 VDC, D-Coil, Deutsch
24DS	24 VDC, D-Coil, Dual Spade
24EG	24 VDC, E-Coil, DIN 43650
24EJ	24 VDC, E-Coil, AMP Jr.
24EL	24 VDC, E-Coil, Dual Lead Wires, 18 inches long
24EL/36	24 VDC, E-Coil, Dual Lead Wires, 36 inches long
24ER	24 VDC, E-Coil, Deutsch
24EY	24 VDC, E-Coil, Metri-Pack 150
36DS	36 VDC, D-Coil, Dual Spade