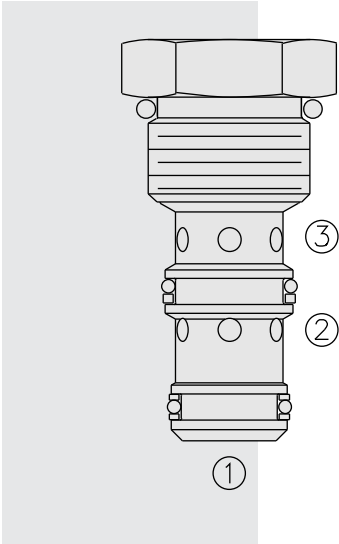


## PC10-32 Check, Pilot-to-Open, 2:1 Pilot Ratio



### DESCRIPTION

A screw-in, cartridge-style, pilot-operated, hydraulic check valve for use in blocking or load-holding circuits.

### OPERATION

The **PC10-32** allows flow passage from ② to ③, while normally blocking flow from ③ to ②. Flow will be allowed from ③ to ② when pressure is applied at ①.

The cartridge has a 2:1 pilot ratio, meaning that at least one-half of the load pressure held at ③ is required at ① to open the valve.

The check is spring-biased to assure holding in static or no-load conditions. A sealed pilot piston option is available.

### FEATURES

- Hardened seat for long life and low leakage.
- Optional sealed piston.
- Industry common cavity.

### RATINGS

**Operating Pressure:** 240 bar (3500 psi)

**Flow:** See Performance Chart

**Internal Leakage:**

- ③ to ②: 0.25 cc/minute (5 drops/minute) max. at 240 bar (3500 psi)
- ② to ① (without sealed piston): 115 cc/minute (7 cu. in./minute) max. at 240 bar (3500 psi)

**Pilot Ratio:** 2:1

**Check Bias Spring:** 2.07 bar (30 psi);  
With sealed piston option: 6.9 bar (100 psi) minimum

**Temperature:** -40 to 120°C with standard Buna seals

**Filtration:** See page 9.010.1

**Fluids:** Mineral-based or synthetics with lubricating properties at viscosities of 7.4 to 420 cSt (50 to 2000 sus); See Temperature and Oil Viscosity, page 9.060.1

**Installation:** No restrictions; See page 9.020.1

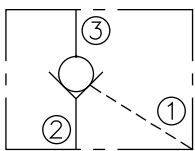
**Cavity:** VC10-3; See page 9.110.1

**Cavity Tool:** CT10-3XX; See page 8.600.1

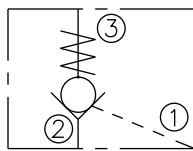
**Seal Kit:** SK10-3X-TM; See page 8.650.1

### SYMBOLS

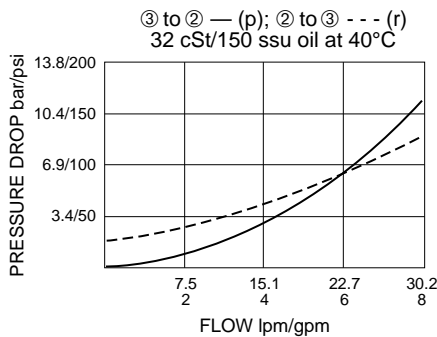
**USASI:**



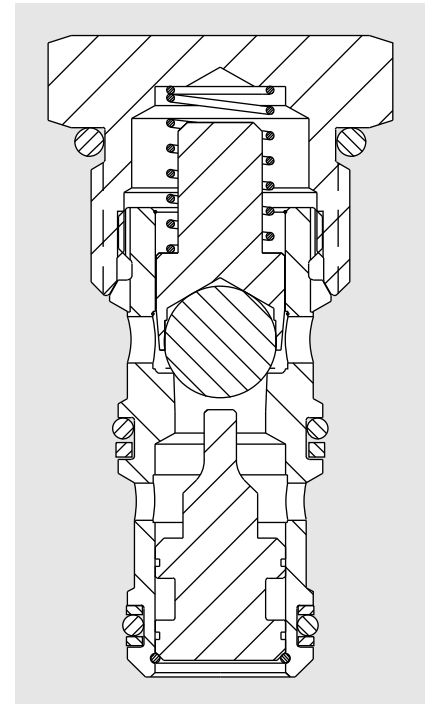
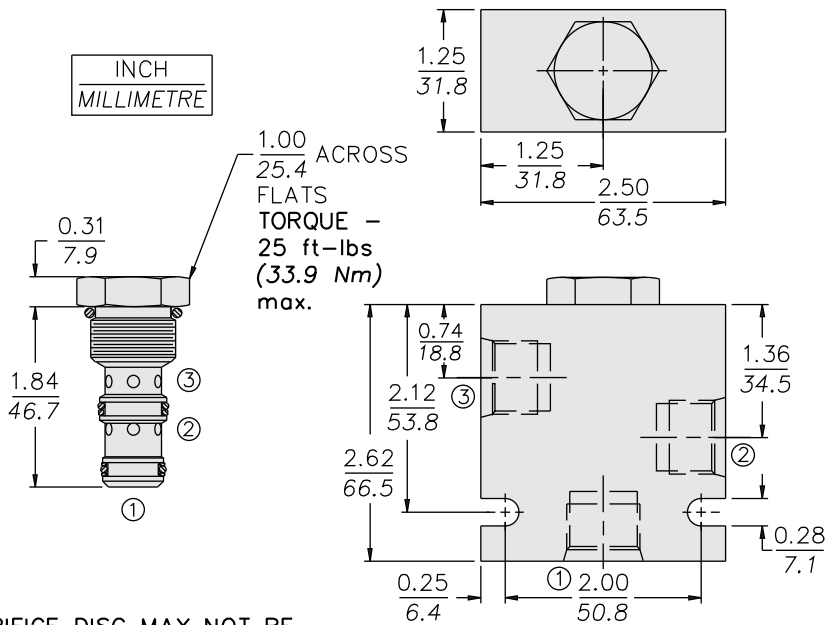
**ISO:**



### PERFORMANCE (Cartridge Only)



**DIMENSIONS**



ORIFICE DISC MAY NOT BE USED WITH THIS PRODUCT.

**MATERIALS**

**Cartridge:** Weight: 0.09 kg. (0.20 lbs.)  
Steel with hardened work surfaces.  
Zinc-plated exposed surfaces.  
Buna N O-rings and polyester elastomer back-ups standard.

**Standard Ported Body:** Weight: 0.36 kg. (0.80 lbs.) Anodized high-strength 6061 T6 aluminum alloy, rated to 207 bar (3000 psi). Ductile iron bodies available; dimensions may differ. See page 8.010.1

**TO ORDER**

PC10-32 - - -

- Porting**  
Cartridge Only **0**  
SAE 6 **6T**  
SAE 8 **8T**  
1/4 in. BSP\* **2B**  
3/8 in. BSP\* **3B**

\*BSP Body; U.K. Mfr. Only

**Bias Spring**

- 30** 2.1 bar/30 psi  
**100** 6.9 bar/100 psi  
Note: Non-standard bias spring pressures available for OEM applications. Consult factory.

**Seals**

- N** Buna N (Std.)  
2.07 bar (30 psi) spring  
**NS** Buna N with Sealed Piston  
6.9 bar (100 psi) spring minimum  
**V** Fluorocarbon  
2.07 bar (30 psi) spring  
**VS** Fluorocarbon with Sealed Piston  
6.9 bar (100 psi) spring minimum