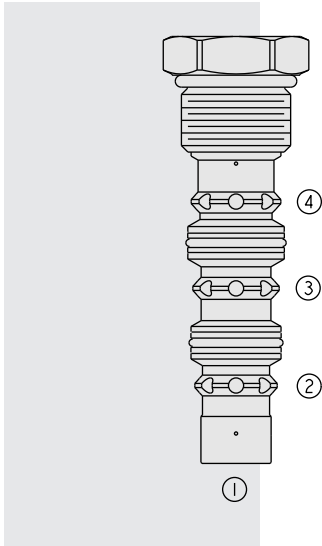


HS52-43 Low Side (Hot Oil) Shuttle,



DESCRIPTION

A spring centered, spool-type, closed in neutral, 3-position, 3-way hot oil shuttle valve, which may be used on hydrostatic transmissions to direct charge pump oil to a heat exchanger or to tank.

OPERATION

With internal piloting at port 1, 2 or 4, the **HS52-43** will direct oil from the port opposite of the piloted port to port 3, thus removing oil from the low-pressure side for cooling or filtration purposes. The valve has a spring-centered spool, and is closed in neutral position.

FEATURES

- Spring-centered spool.
- Closed in neutral position.
- Hardened parts for long life.
- Industry common cavity.

RATINGS

Operating Pressure: 345 bar (5000 psi) maximum. If operating at maximum pressure, use steel or ductile iron rather than aluminum body.

Flow Rating: Up to 113 lpm (30 gpm)

Bias Spring Value: 4.1 bar (60 psi)

Internal Leakage: 1640 ml/min. (100 cu. in./minute) max. at 345 bar (5000 psi)

Operating Temperature: -40 to 100°C (-40 to 212°F) with Buna seals;
 -26 to 204°C (-15 to 400°F) with fluorocarbon seals;
 -54 to 107°C (-65 to 225°F) with polyurethane seals.

Filtration: See page 9.010.1

Fluids: Mineral-based or synthetics with lubricating properties at viscosities of 7.4 to 420 cSt (50 to 2000 sus); See Temperature and Oil Viscosity, page 9.060.1

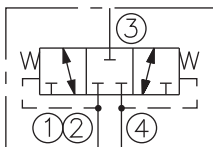
Installation: No restrictions; See page 9.020.1

Cavity: VC12-4; See page 9.112.1

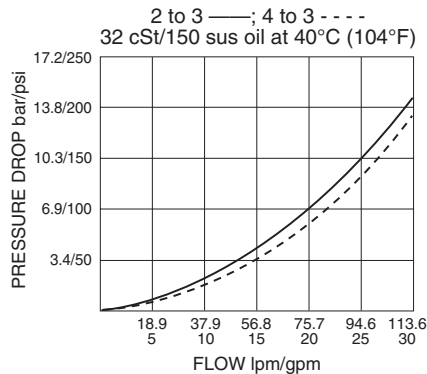
Cavity Tool: CT12-4XX; See page 8.600.1

Seal Kit: SK52-4x-MM, See page 8.650.1

ISO SYMBOL



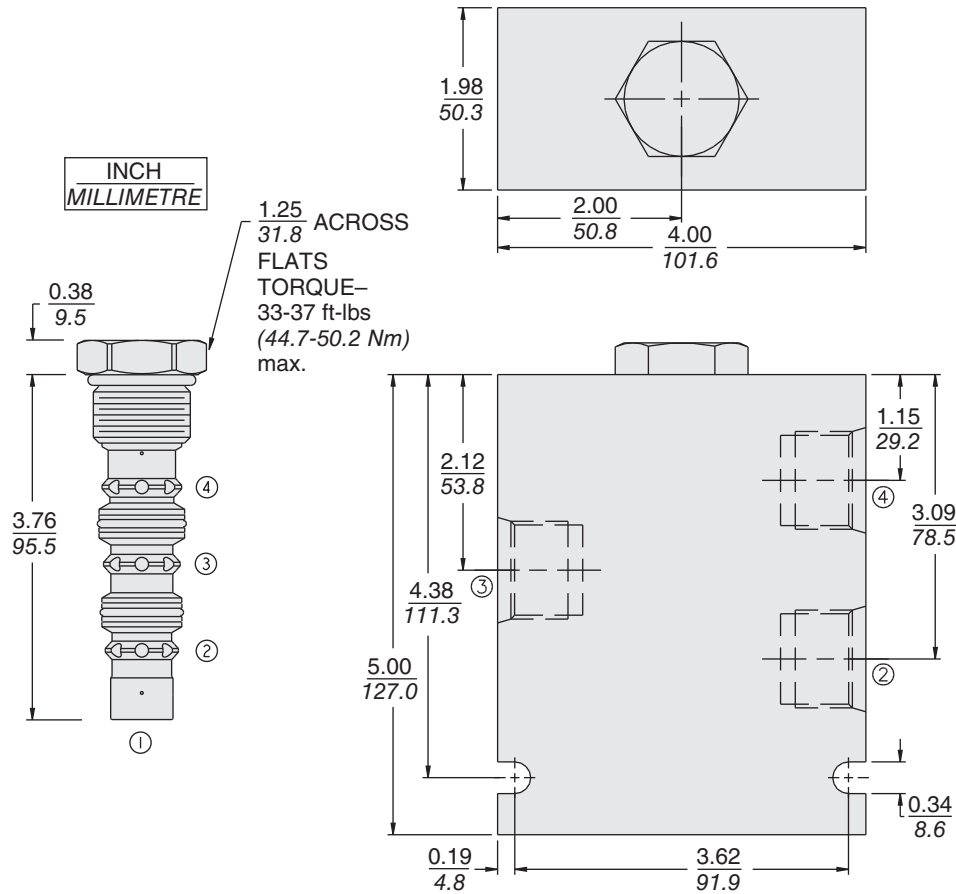
PERFORMANCE (Cartridge Only)



Spring Centered

HS52-43

DIMENSIONS



MATERIALS

Cartridge: Weight: 0.26 kg. (0.57 lbs.)

Steel with hardened work surfaces.
Zinc-plated exposed surfaces.
Polyurethane seals and polyester elastomer back-ups required for operation over 207 bar (3000 psi).

Ported Body: Weight: 3.57 kg.

(7.87 lbs.); ductile iron (code "D") standard, rated to 345 bar (5000 psi).
Some body dimensions may differ;
See page 8.012.1

TO ORDER

HS52 - 43 -

Porting

Cartridge Only 0
SAE 12 (Ductile) 12TD
SAE 12 (Steel) 12TS

Seals

- N** Buna N (Std.)
- V** Fluorocarbon
- P** Polyurethane — recommended for operation at 345 bar (5000 psi)