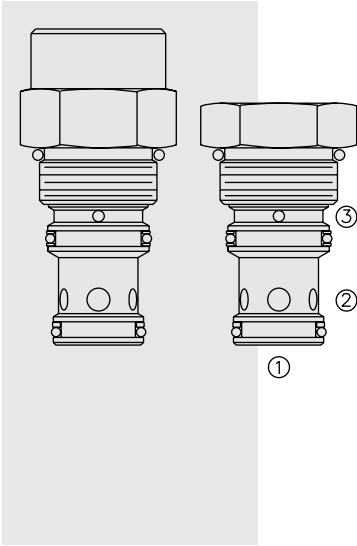


EP16-S35 Piloted Spool-Type Logic Element



DESCRIPTION

A spool-type, screw-in, cartridge-style, hydraulic directional element, with multi-function potential when used with other directional, pressure, or flow control devices. The valve can be ordered with a selection of bias springs and a "G" metering option for metered flow when opening. The tall cap option is required for higher bias springs. A manual override option and an optional cover cap are also available for this valve model.

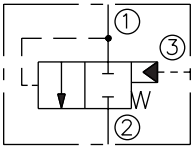
OPERATION

The EP16-S35 is a spring-biased blocking valve which will shift to allow full flow from 1 to 2 only when pressure at 1 exceeds the cumulative pressure of 3, plus the bias spring pressure value. EP16-S35 is a pilot-to-close directional valve. With no pressure at 3, flow will be allowed from 1 to 2 once the bias spring force is overcome with pressure at 1. The EP16-S35 can also be specified with a metering cage ("G" option) to regulate the gain in flow upon opening. It requires a tall cap when specified with bias springs from 6,2 to 16,5 bar (90 to 240 psi). The 240 psi spring requires an extra tall cap. A manual override option is also available for valves with bias springs from 6,2 to 16,5 bar (90-240 psi). **NOTE:** Orifice discs should not be used with this valve.

FEATURES

- Multiple function/application potential.
- Low pressure drop.
- Industry common cavity.
- Manual override available with 40, 90, 110, 160 and 240 psi bias springs.
- A tall cap option is required for for 90, 110, 160 and 240 psi bias springs.
- A covered cap option is available.
- "G" metering option for metered flow control when opening.

ISO SYMBOL



RATINGS

Operating Pressure: 240 bar (3500 psi)

Proof Pressure: 420 bar (6090 psi)

Flow Rating: Up to 189 lpm (50 gpm)

Internal Leakage: 164 cc/minute (10 cu. in./minute) max. at 207 bar (3000 psi)

Operating Temperature: -40 to 100°C (-40 to 212° F) with standard Buna seals;

-26 to 204°C (-15 to 400° F) with fluorocarbon seals;

-54 to 104°C (-65 to 225° F) with polyurethane seals.

Filtration: See page 9.010.1

Fluids: Mineral-based or synthetics with lubricating properties at viscosities of 7.4 to 420 cSt (50 to 2000 sus); See Temperature and Oil Viscosity, page 9.060.1

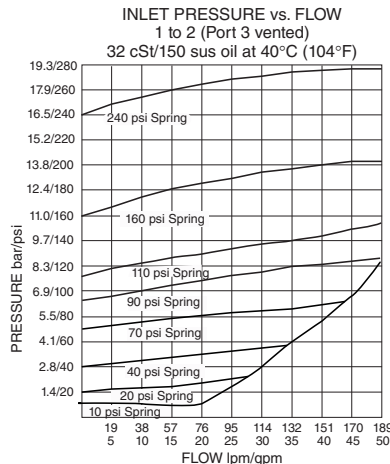
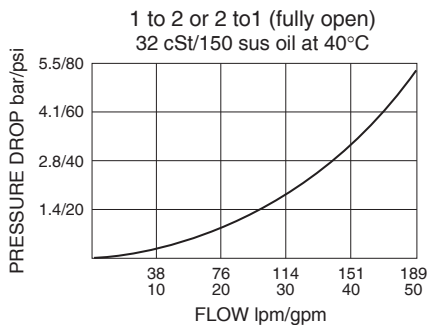
Installation: No restrictions; See page 9.020.1

Cavity: VC16-S3; See page 9.116.1

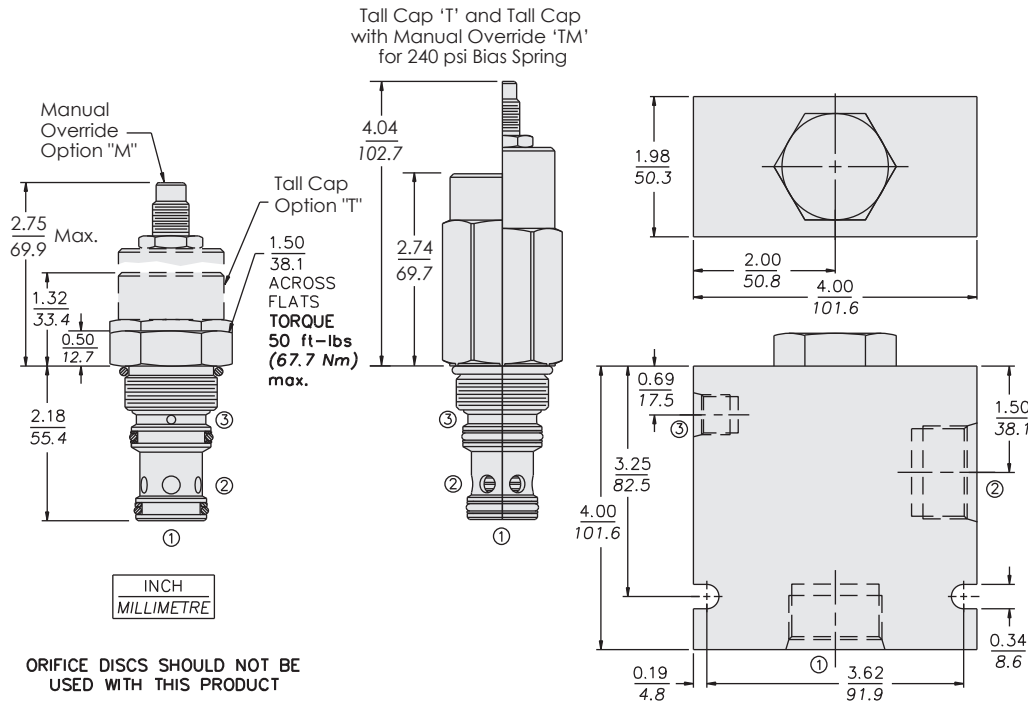
Cavity Tool: CT16-S3xx; See page 8.600.1

Seal Kit: SK16-S3x-MM; See page 8.650.1

PERFORMANCE (Cartridge Only)



DIMENSIONS



MATERIALS

Cartridge: Weight: Ranges from 0.29 to 0.91 kg (0.63 to 2.01 lb) depending on options ordered. Steel with hardened work surfaces. Zinc-plated exposed surfaces. Buna N seals standard.

Standard Ported Body: Weight: 1.50 kg. (3.3 lbs.) Anodized high-strength aluminum alloy, rated to 207 bar (3000 psi). Ductile iron bodies available; dimensions may differ. See page 8.016.1.

TO ORDER

EP16-S35		-	-	-	-	-	-
Adapter Option	None (Blank)						
	Tall Cap	T					
Manual Override Option	None (Blank)						
	Manual Override	M					
	Manual Override available only with 6.2, 7.6, 11.0 and 16.5 bar (90, 110, 160 and 240 psi) bias springs.						
Cover Cap Option	None (Blank)						
	Cap	C					
Cage Option	Regular (Blank)						
	Metering	G					
Porting	Cartridge Only	0					
	SAE 16 w/SAE 6 Pilot Port	16T					
	Bias Spring						
	10	0.7 bar (10 psi)					
	20	1.4 bar (20 psi)					
	40	2.8 bar (40 psi)					
	70	4.8 bar (70 psi)					
	‡ 90	6.2 bar (90 psi)					
	‡ 110	7.6 bar (110 psi)					
	‡ 160	11.0 bar (160 psi)					
	‡ 240	16.5 bar (240 psi)					
	‡ T Tall Cap Option required for larger springs.						
	Seals						
	P	Polyurethane					
	Note: Polyurethane seals required for pressures over 241 bar (3500 psi). Consult factory for additional seal options.						