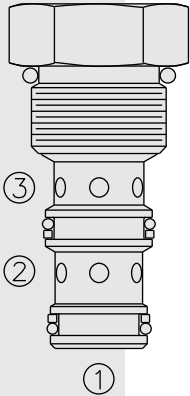


FR10-32F Flow Regulator, Fixed Orifice,

U.S. Patent
6,167,906



DESCRIPTION

A screw-in, cartridge-style, pressure-compensated, fixed orifice, bi-directional, restrictive-type flow control valve.

OPERATION

The FR10-32F maintains a constant flow rate regardless of pressure drop across the valve and regardless of flow direction: from port 2 to port 3 or from port 3 to port 2. Port 1 should be blocked.

FEATURES

- Hardened seat for long life and low leakage .
- Excellent linearity and hysteresis.
- Industry common cavity.
- U.S. patented design.
- Fixed orifice.
- Bi-directional.

RATINGS

Operating Pressure: Inlet: 240 bar (3500 psi)

Flow Settings: 2.0 to 19.0 lpm (0.5 to 5 gpm); see performance chart

Internal Leakage: 0.38 ml/minute (0.10 gpm/minute) maximum

Temperature: -40 to 100°C (-40 to 212°F) with Buna N seals;
-26 to 205°C (-15 to 400°F) with fluorocarbon seals

Filtration: See page 9.010.1

Fluids: Mineral-based or synthetics with lubricating properties at viscosities of 7.4 to 420 cSt (50 to 2000 sus); See Temperature and Oil Viscosity, page 9.060.1

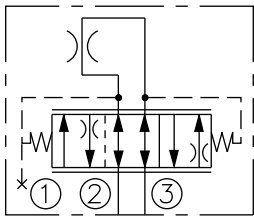
Installation: No restrictions; See page 9.020.1

Cavity: VC10-3; See page 9.110.1

Cavity Tool: CT10-3XX; See page 8.600.1

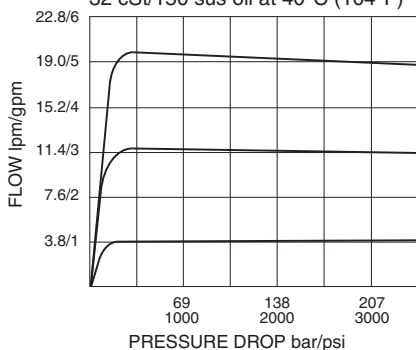
Seal Kit: SK10-3X-MM; See page 8.650.1

ISO SYMBOL



PERFORMANCE (Cartridge Only)

Regulated Flow vs. Pressure Drop
2 to 3 or 3 to 2
1, 3 and 5 gpm settings shown
32 cSt/150 sus oil at 40°C (104°F)

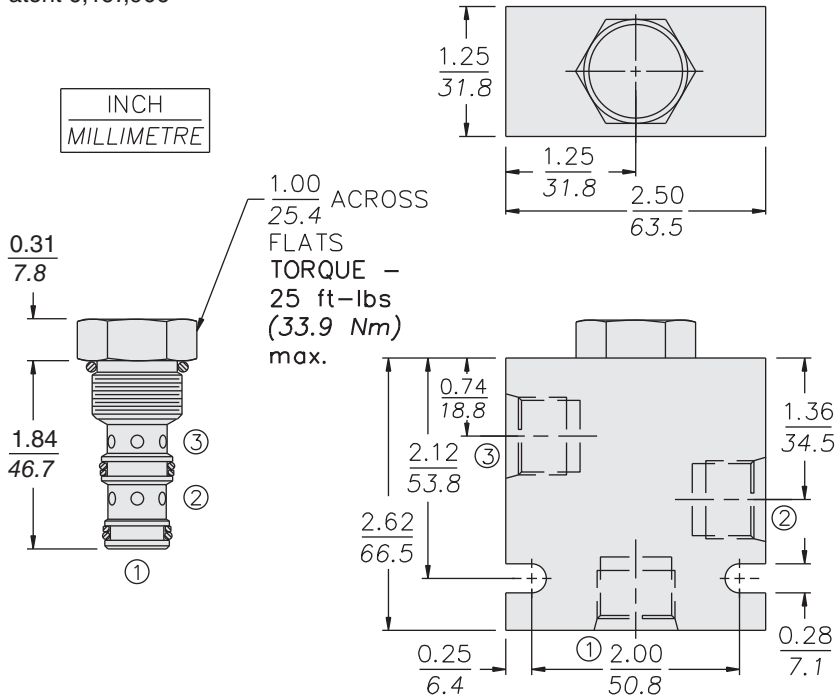


Bi-Directional

FR10-32F

DIMENSIONS

U.S. Patent 6,167,906



MATERIALS

Cartridge: Weight: 0.30 kg. (0.68 lbs.)
Steel with hardened work surfaces.
Zinc-plated exposed surfaces.
Buna N O-rings and polyester
elastomer back-ups standard.

Standard Ported Body: Weight:
0.36 kg. (0.80 lbs.) Anodized high-
strength aluminum alloy, rated to
207 bar (3000 psi). Ductile iron
bodies available; dimensions may
differ. See page 8.010.1

TO ORDER

FR10-32F -		- /	
Porting			
Cartridge Only	0		
SAE 6	6T		
SAE 8	8T		
1/4 in. BSP*	2B		
3/8 in. BSP*	3B		
*BSP Body; U.K. Mfr. Only			
Seals			
Buna N (Std.)	N		
Fluorocarbon	V		

Must Specify:
Setting in gpm

Specify; For example:
0.5 0.5 gpm
5.0 5.0 gpm
etc.

Setting in lpm

Specify; For example:
M2.0 2.0 lpm
M19.0 19.0 lpm
etc.