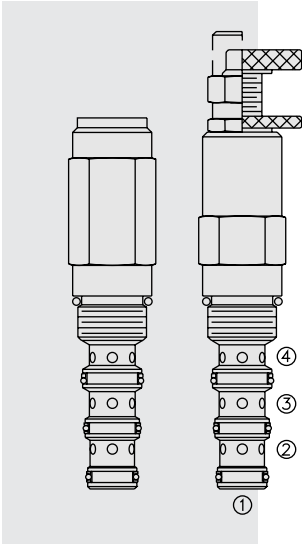


PS10-41 Sequence, N.O., External Pilot & Drain



DESCRIPTION

A screw-in, cartridge-style, direct-acting, spool-type, hydraulic sequence valve with external pilot and spring chamber drain. It is designed to function as a pressure-signalled, remote pilot-operated, two-way, normally open valve. A separate spring chamber drain galley allows port ③ or ② to be fully pressurized.

OPERATION

In neutral (unpiloted), the **PS10-41** allows flow between ③ and ② bidirectionally. The spring chamber is constantly vented at ④.

On attainment of a pre-determined pressure at ①, the cartridge shifts to close ③ to ② bidirectionally.

FEATURES

- Adjustments cannot be backed out of the valve.
- Adjustments prohibit springs from going solid.
- Optional spring ranges to 151.7 bar (2200 psi).
- Hardened precision spool and cage for long life.
- Industry common cavity.

RATINGS

Operating Pressure: 240 bar (3500 psi)

Flow: See Performance Chart

Internal Leakage: 82 cc/minute (5 cu. in./minute) max. to 85% of nominal setting

Standard Spring Ranges: 2.8 to 27.6 bar (40 to 400 psi); 15.2 to 151.7 bar (220 to 2200 psi)

Temperature: -40 to 120°C with standard Buna seals

Filtration: See page 9.010.1

Fluids: Mineral-based or synthetics with lubricating properties at viscosities of 7.4 to 420 cSt (50 to 2000 sus); See Temperature and Oil Viscosity, page 9.060.1

Installation: No restrictions; See page 9.020.1

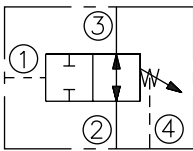
Cavity: VC10-4; See page 9.110.1

Cavity Tool: CT10-4XX; See page 8.600.1

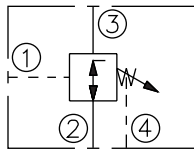
Seal Kit: SK10-4X-BMM; See page 8.650.1

SYMBOLS

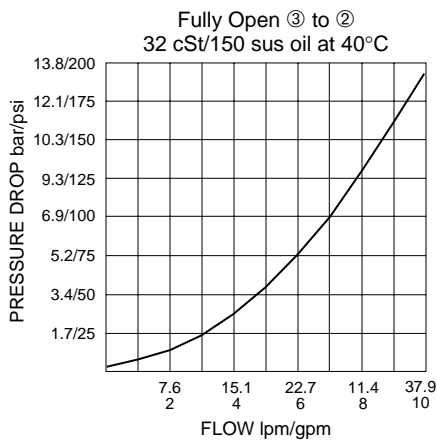
USASI:



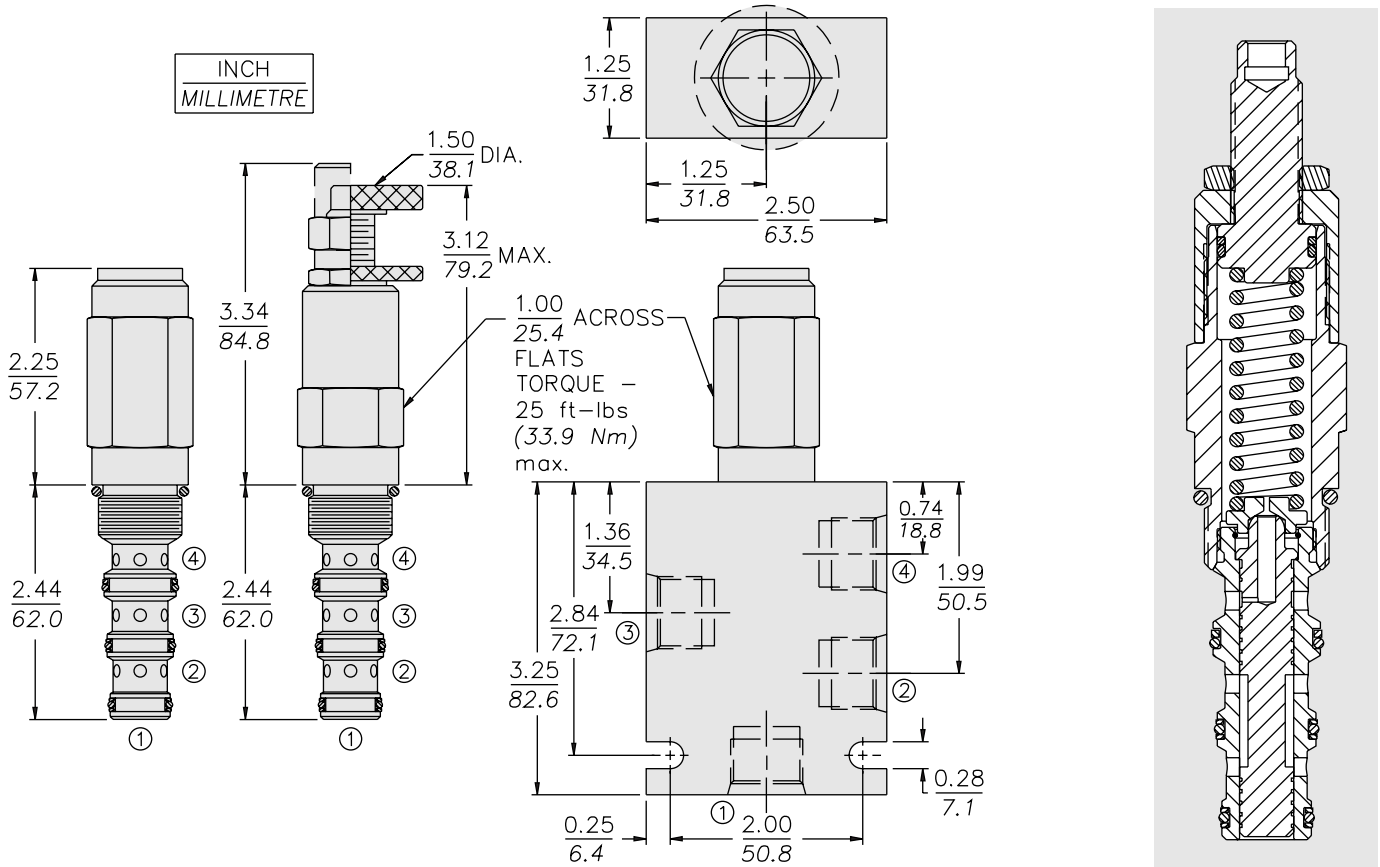
ISO:



PERFORMANCE (Cartridge Only)



DIMENSIONS



MATERIALS

Cartridge: Weight: 0.34 kg. (0.70 lbs.)
 Steel with hardened work surfaces.
 Zinc-plated exposed surfaces.
 Buna N O-rings and polyester elastomer back-ups standard.
 Anodized aluminum knobs and caps.

Standard Ported Body: Weight: 0.34 kg. (0.70 lbs.); Anodized high-strength 6061 T6 aluminum alloy, rated to 207 bar (3000 psi). Ductile iron and steel bodies available; dimensions may differ. See page 8.010.1.

TO ORDER

PS10-41 - - - /

<p>Adjustment Option</p> <p>1/4 in. Hex Allen Head A 1-1/2 in. Dia. Alum Knob B Option A w/Cover Cap C Factory Preset Non-Adjst. F Factory Preset Hidden Adjustment H Option C w/Lockwire Holes L</p>	<p>Porting</p> <p>Cartridge Only 0 SAE 6 6T SAE 8 8T 1/4 in. BSP* 2B 3/8 in. BSP* 3B</p>	<p>Seals</p> <p>Buna N (Std.) N Fluorocarbon V</p>	<p>Setting in bars[†]</p> <p>(Blank) for Adjustable, or Specify, for example: M25 25 bar M100 100 bar</p> <p>Setting in psi[†]</p> <p>(Blank) for Adjustable, or Specify, for example: 9.0 900 psi 21.0 2100 psi</p>	<p>Spring Range</p> <p>4 2.8 to 27.6 bar (40 to 400 psi) 22 15.2 to 151.7 bar (220 to 2200 psi)</p>
---	--	--	--	---

*BSP Body; U.K. Mfr. Only

[†]Adjustable valves will be preset to approx. 50% of spring max. potential.