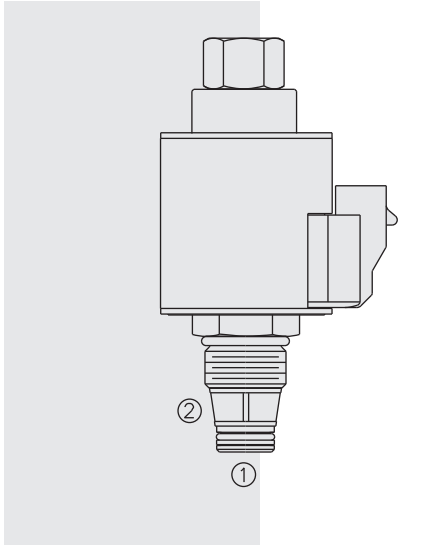


SP10-21 Poppet, 2-Way, Normally Open



DESCRIPTION

A proportional solenoid-operated, 2-way, poppet-type, normally open, screw-in hydraulic cartridge valve for low-leakage blocking and load-holding applications.

OPERATION

When energized, the **SP10-21** acts as a check valve, allowing flow from 1 to 2 while blocking flow from 2 to 1. When de-energized, the poppet lifts to open the 2 to 1 flow path. Flow rate varies with manual override, screen and metering options.

FEATURES

- Manual override option.
- Screen option.
- Industry-common cavity.
- Continuous-duty rated coils.
- Linear metering option.
- Efficient wet-armature construction.
- Optional waterproof E-Coils rated up to IP69K.

RATINGS

Operating Pressure: 250 bar (3625 psi)

Flow Rating: See Performance Chart

Max. Internal Leakage: 5 drops per minute at 207 bar (3000 psi)

Minimum Operating Dither/Pulse Frequency: 70 Hz

Temperature: -40 to 100°C (-40 to 212°F) with standard Buna seals; -26 to 204°C (-15 to 400°F) with fluorocarbon seals; -54 to 107°C (-65 to 225°F) with polyurethane seals.

Filtration: See page 9.010.1

Fluids: Mineral-based or synthetics with lubricating properties at viscosities of 7.4 to 420 cSt (50 to 2000 sus); See Temperature and Oil Viscosity, page 9.060.1

Installation: No Restrictions. See page 9.020.1

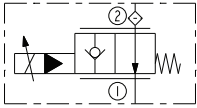
Cavity: VC10-2; See page 9.110.1

Cavity Tool: CT10-2XX; See page 8.600.1

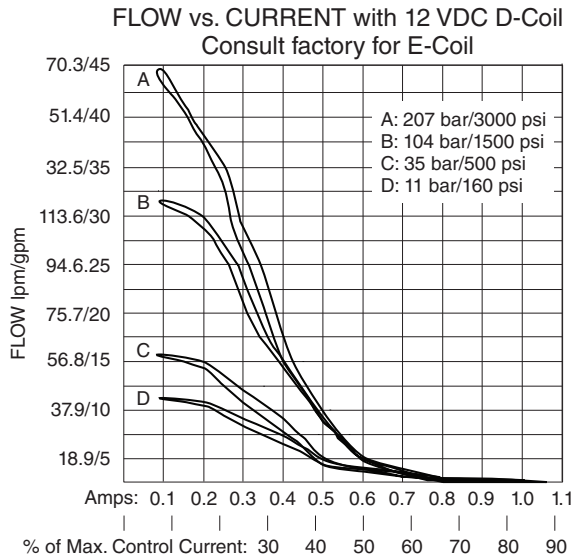
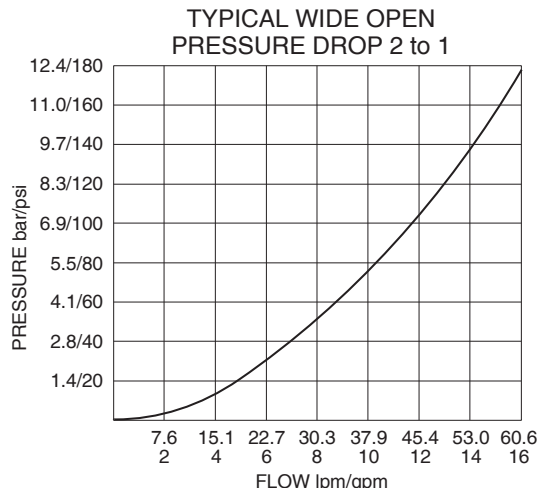
Seal Kit: SK10-2X-T; See page 8.650.1

Coil Nut: Part No. 7004400; with manual override Part No. 4558740; Spacer Part No. 4558750

ISO SYMBOL

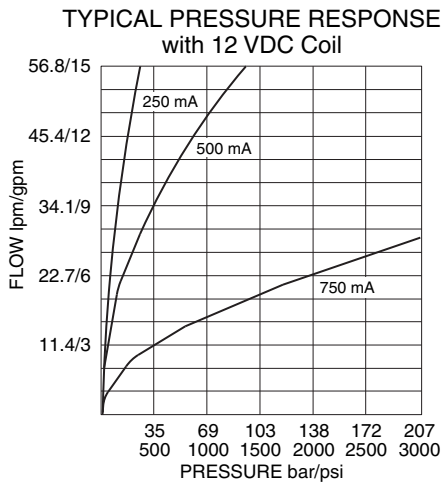


PERFORMANCE Note: Electronic Controller is required to ramp current.



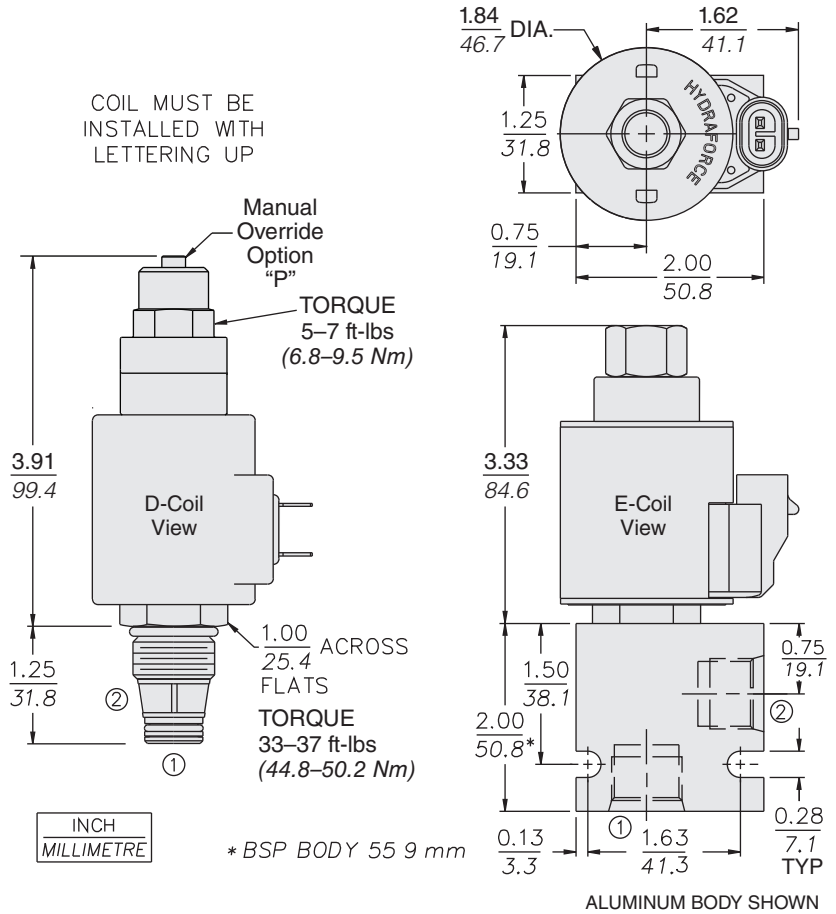
Performance charts continued on next page.

PERFORMANCE (cont'd.)



Recommended Electronic Controllers:
See page 2.001.1 or our Electronics catalog.

DIMENSIONS



MATERIALS

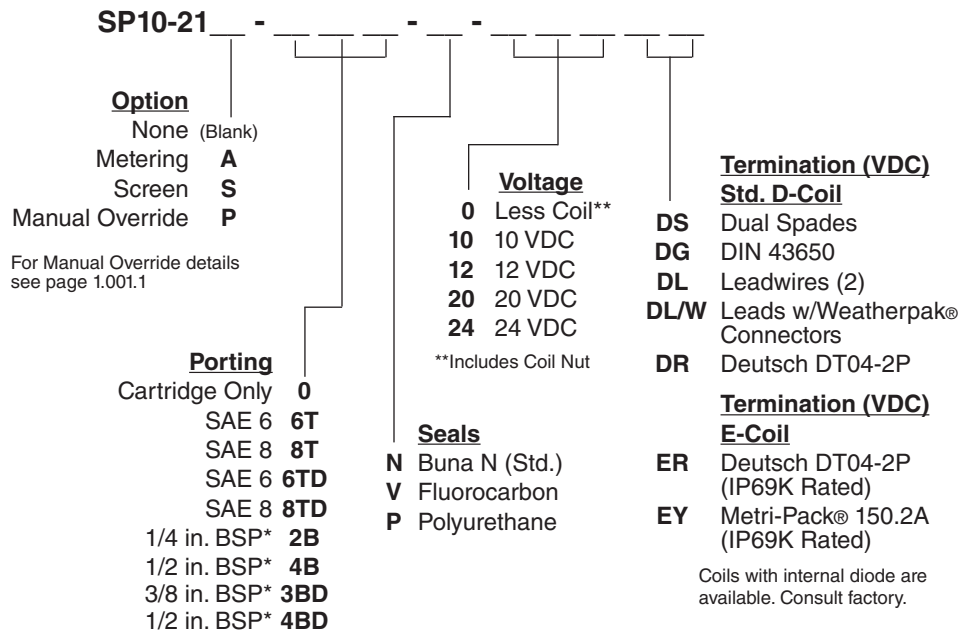
Cartridge: Weight: 0.17 kg. (0.37 lbs.) Steel with hardened work surfaces. Zinc-plated exposed surfaces Buna N O-rings and back-ups standard.

Standard Ported Body: Weight: 0.16 kg. (0.35 lbs.) Anodized high-strength aluminum alloy, rated to 207 bar (3000 psi). Ductile iron bodies available; dimensions may differ. See page 8.010.1.

Standard D-Coil: Weight: 0.27 kg. (0.60 lbs.) Unitized thermoplastic encapsulated, Class H high temperature magnet wire. See page 3.200.1

E-Coil: Weight: 0.42 kg. (0.93 lbs.) Perfect wound, fully encapsulated with rugged external metal shell. Rated up to IP69K with integral connectors. See page 3.400.1

TO ORDER



*BSP Body; U.K. Mfr. Only