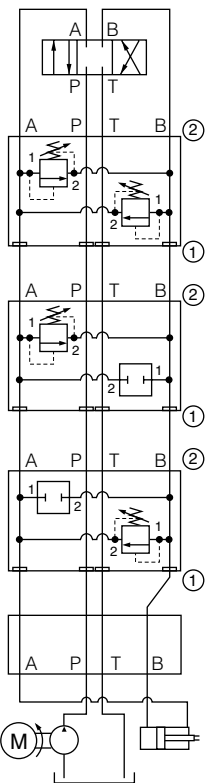
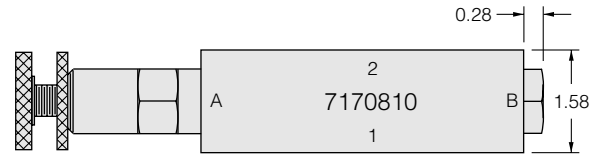
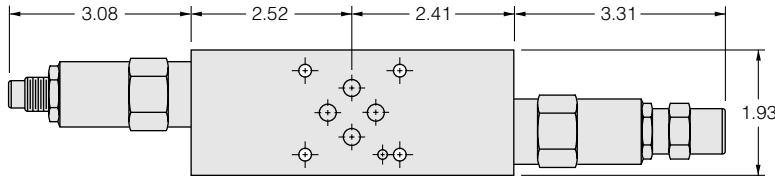


Pressure Control Sandwich Valves

Standard HydraForce cartridge relief valves offer quiet, stable response in most load conditions. Now available in sandwich format, these reliefs can be selectively applied in both pressure limiting and pressure regulating applications.



Cross Port Relief, Direct-Acting

Side Up: 2 Plug: None
Block No.: 7170810 Plug Side: n/a

Model No. CRV10-20x-S03C-xC-xx/xx

Seal Plate: No Catalog Ref.: 6.260.1
Max Flow: 10 gpm

Relief, Direct-Acting A to B

Side Up: 2 Plug: CP10-20-x
Block No.: 7170810 Plug Side: B

Model No. RV10-20x-S03E-xC-xx/xx

Seal Plate: No Catalog Ref.: 6.020.1
Max. Flow: 10 gpm

Relief, Direct-Acting B to A

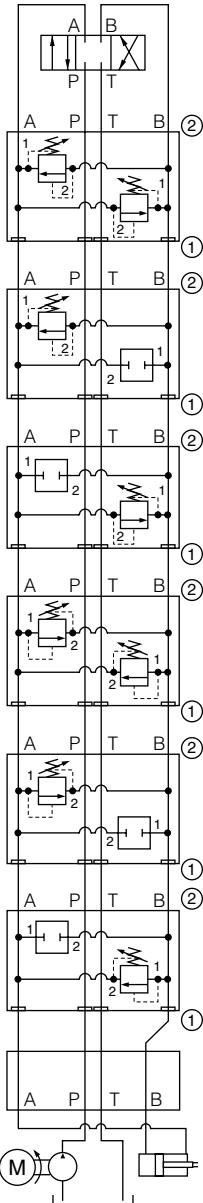
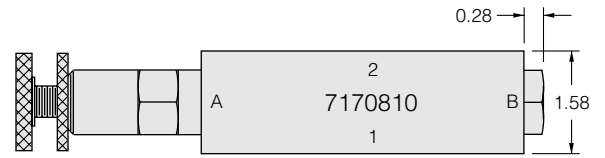
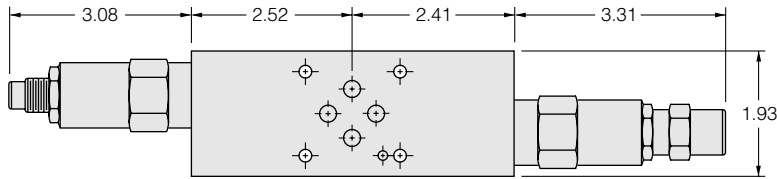
Side Up: 2 Plug: CP10-20-x
Block No.: 7170810 Plug Side: A

Model No. RV10-20x-S03F-xC-xx/xx

Seal Plate: No Catalog Ref.: 6.020.1
Max. Flow: 10 gpm

ISO/CETOP 3 Manifold

Pressure Control Sandwich Valves



Cross Port Relief, Differential Area

Side Up: 2 Plug: None
 Block No.: 7170810 Plug Side: n/a

Model No. CRV10-22x-S03C-xC-xx/xx

Seal Plate: No Catalog Ref.: 6.280.1
 Max. Flow: 20 gpm

Port Relief, Differential Area, B to A

Side Up: 2 Plug: CP10-20-x
 Block No.: 7170810 Plug Side: B

Model No. RV10-22x-S03F-xC-xx/xx

Seal Plate: No Catalog Ref.: 6.050.1
 Max. Flow: 20 gpm

Port Relief, Differential Area, A to B

Side Up: 2 Plug: CP10-20-x
 Block No.: 7170810 Plug Side: A

Model No. RV10-22x-S03E-xC-xx/xx

Seal Plate: No Catalog Ref.: 6.050.1
 Max. Flow: 20 gpm

Cross Port Relief, Pilot-Operated

Side Up: 2 Plug: None
 Block No.: 7170810 Plug Side: n/a

Model No. CRV10-26x-S03C-xC-xx/xx

Seal Plate: No Catalog Ref.:
 Max. Flow: 30 gpm

Port Relief, Pilot-Operated, A to B

Side Up: 2 Plug: CP10-20-x
 Block No.: 7170810 Plug Side: B

Model No. RV10-26x-S03E-xC-xx/xx

Seal Plate: No Catalog Ref.: 6.150.1
 Max. Flow: 30 gpm

Port Relief, Pilot-Operated, B to A

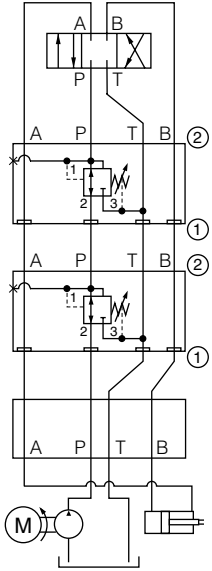
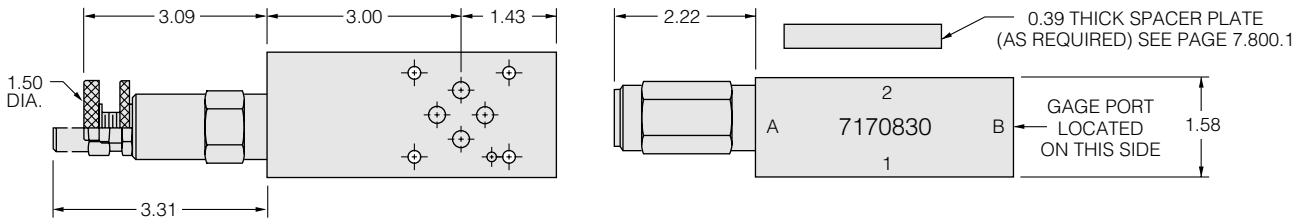
Side Up: 2 Plug: CP10-20-x
 Block No.: 7170810 Plug Side: A

Model No. RV10-26x-S03F-xC-xx/xx

Seal Plate: No Catalog Ref.: 6.150.1
 Max. Flow: 30 gpm

ISO/CETOP 3 Manifold

Pressure Control Sandwich Valves



Pressure Reducing/Relieving, Direct-Acting on P

Model No. PR10-32x-S03P-x-xx/xx

Side Up: 2

Plug: None

Seal Plate: No

Catalog Ref.: 6.420.1

Block No.: 7170830

Plug Side: n/a

Max Flow: 10 gpm

Pressure Reducing/Relieving, Pilot Operated on P

Model No. PR10-36x-S03P-x-xx/xx

Side Up: 2

Plug: None

Seal Plate: No

Catalog Ref.: 6.440.1

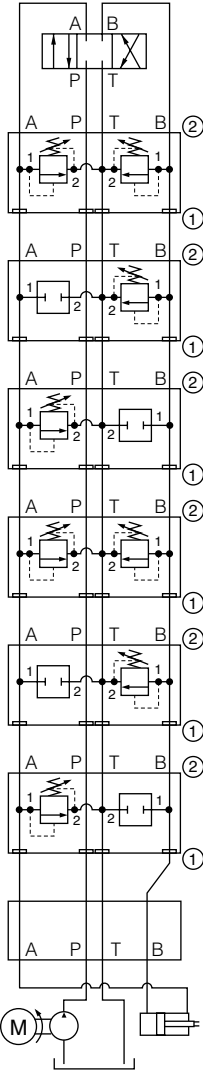
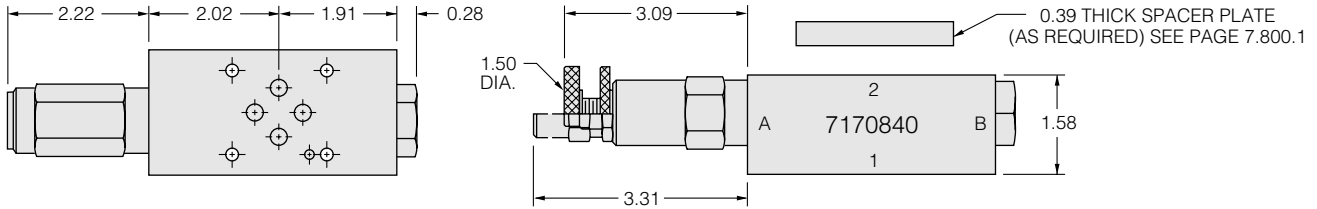
Block No.: 7170830

Plug Side: n/a

Max. Flow: 15 gpm

ISO/CETOP 3 Manifold

Pressure Control Sandwich Valves



Relief, Direct-Acting, A & B to T

Side Up: 2 Plug: None
Block No.: 7170840 Plug Side: n/a

Model No. RV10-20x-S03W-xC-xx/xx

Seal Plate: No Catalog Ref.: 6.020.1
Max Flow: 10 gpm

Relief, Direct-Acting, B to T

Side Up: 2 Plug: CP10-20-x
Block No.: 7170840 Plug Side: A

Model No. RV10-20x-S03V-xC-xx/xx

Seal Plate: No Catalog Ref.: 6.020.1
Max Flow: 10 gpm

Relief, Direct-Acting, A to T

Side Up: 2 Plug: CP10-20-x
Block No.: 7170840 Plug Side: B

Model No. RV10-20x-S03U-xC-xx/xx

Seal Plate: No Catalog Ref.: 6.020.1
Max Flow: 10 gpm

Relief, Pilot Operated, A & B to T

Side Up: 2 Plug: None
Block No.: 7170840 Plug Side: n/a

Model No. RV10-26x-S03W-xC-xx/xx

Seal Plate: No Catalog Ref.: 6.150.1
Max Flow: 30 gpm

Relief, Pilot Operated, B to T

Side Up: 2 Plug: CP10-20-x
Block No.: 7170840 Plug Side: A

Model No. RV10-26x-S03V-xC-xx/xx

Seal Plate: No Catalog Ref.: 6.150.1
Max Flow: 30 gpm

Relief, Pilot Operated, A to T

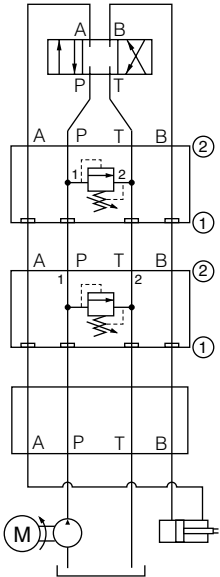
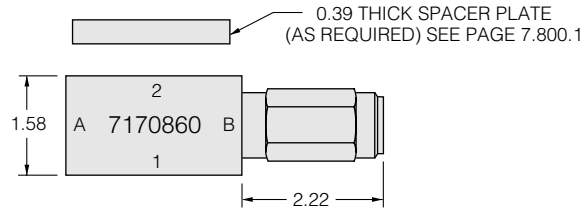
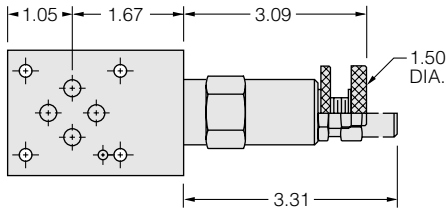
Side Up: 2 Plug: CP10-20-x
Block No.: 7170840 Plug Side: B

Model No. RV10-26x-S03U-xC-xx/xx

Seal Plate: No Catalog Ref.: 6.150.1
Max Flow: 30 gpm

ISO/CETOP 3 Manifold

Pressure Control Sandwich Valves



Relieving, P to T

Model No. RV10-20x-S03S-x-xx

Side Up: 2
Block No.: 7170860

Plug: None
Plug Side: n/a

Seal Plate: No
Max. Flow: 10 gpm

Catalog Ref.: 6.020.1

Relieving, High Capacity, P to T

Model No. RV10-26x-S03S-x-xx

Side Up: 2
Block No.: 7170860

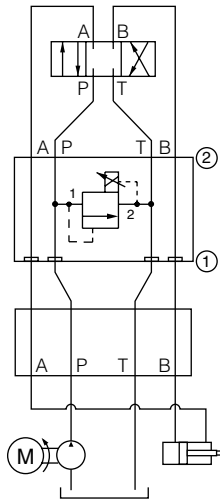
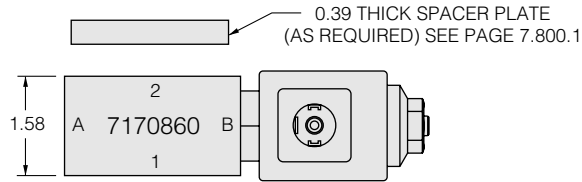
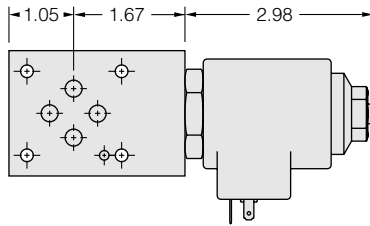
Plug: None
Plug Side: n/a

Seal Plate: No
Max. Flow: 30 gpm

Catalog Ref.: 6.150.1

ISO/CETOP 3 Manifold

Pressure Control Sandwich Valves



Electric Relief Valve

Model No. TS10-26A-S03S-N-xxxx

Side Up: 2

Block No.: 7170860

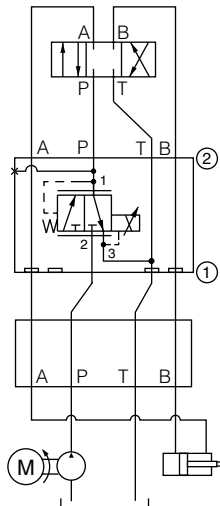
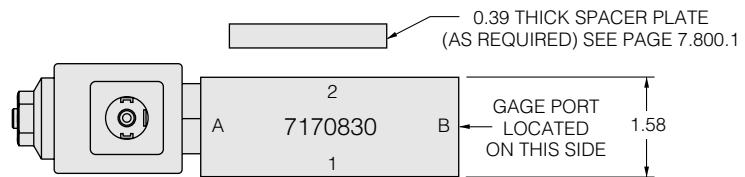
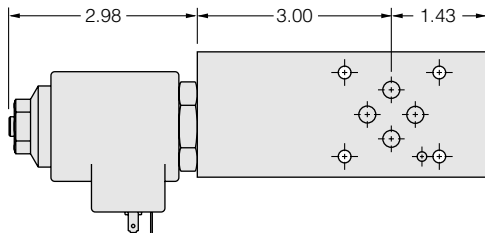
Plug: None

Plug Side: n/a

Seal Plate: No

Catalog Ref.: 2.852.1

Consult factory for standard pressure ramp ranges and other specifications.



Electric Pressure-Reducing Valve

Model No. TS10-36A-S03P-N-xxxx

Side Up: 2

Block No.: 7170830

Plug: None

Plug Side: n/a

Seal Plate: No

Catalog Ref.: 2.900.1

Consult factory for standard pressure ramp ranges and other specifications.