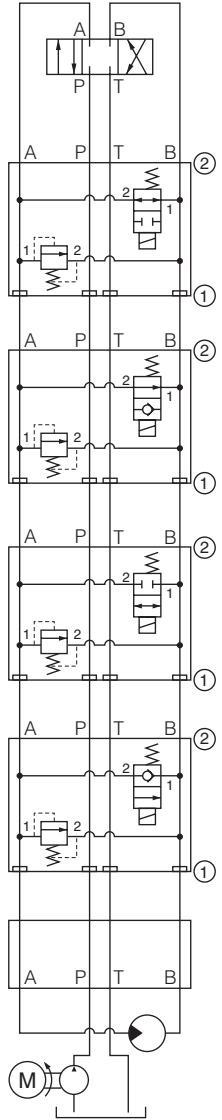
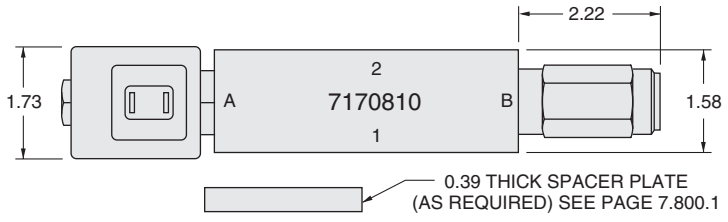
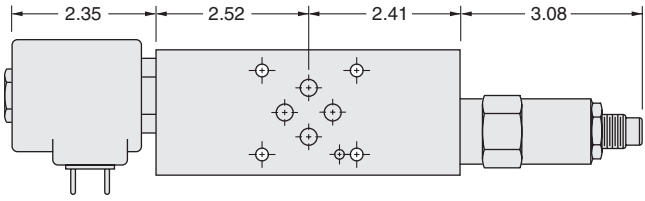


Double Function Sandwich Valves



Solenoid, Normally Open, Unloading/Relieving A to B SRV10-25-S03E-N-xxxx
Side B Model No. SV10-25-x-xxxx Side A Model No. RV10-20A-0-x-33/xx
 Side Up: 2 Plug: None Seal Plate: No Catalog Ref.: 1.076.1, 6.020.1
 Block No.: 7170810 Plug Side: n/a Max Flow: 6 gpm

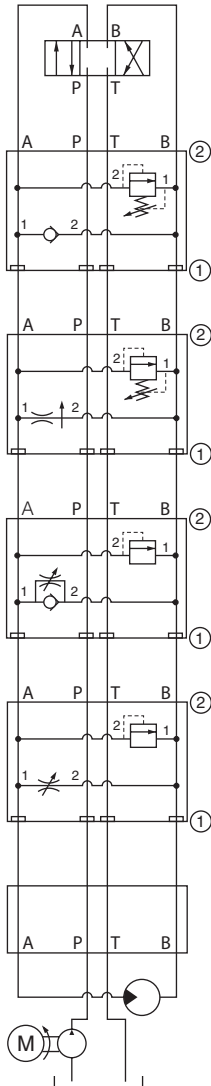
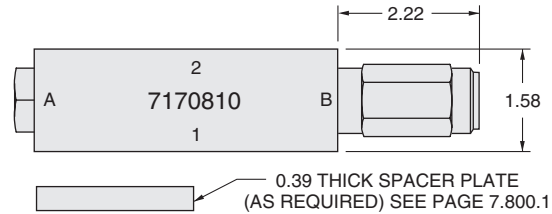
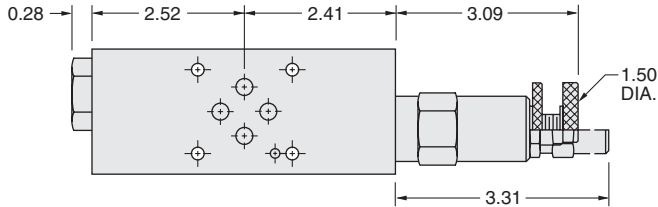
Solenoid, Normally Open, Unloading/Relieving A to B, High Capacity SRV10-21-S03E-N-xxxx
Side B Model No. SV10-21-x-xxxx Side A Model No. RV10-26A-0-x-30/xx
 Side Up: 2 Plug: None Seal Plate: No Catalog Ref.: 1.032.1, 6.150.1
 Block No.: 7170810 Plug Side: n/a Flow passes in reverse across SRV10-21

Solenoid, Normally Closed, Unloading/Relieving A to B SRV10-24-S03E-N-xxxx
Side B Model No. SV10-24-x-xxxx Side A Model No. RV10-20A-0-x-33/xx
 Side Up: 2 Plug: None Seal Plate: No Catalog Ref.: 1.064.1, 6.020.1
 Block No.: 7170810 Plug Side: n/a

Solenoid, Normally Closed, Unloading/Relieving A to B, High Capacity SRV10-20-S03E-N-xxxx
Side B Model No. SV10-20-x-xxxx Side A Model No. RV10-26A-0-x-30/xx
 Side Up: 2 Plug: None Seal Plate: No Catalog Ref.: 1.016.1, 6.150.1
 Block No.: 7170810 Plug Side: n/a Flow passes in reverse across SRV10-20

ISO/CETOP 3 Manifold

Double Function Sandwich Valves



Relief & Anti-Cavitation Check on A
Side B Model No. RV10-22x-x-xx/xx

Side Up: 2 Plug: None
 Block No.: 7170810 Plug Side: n/a
 Note: Reverse cartridges for check on B

RVC10-22x-S03A-x-xx/xx
Side A Model No. CV10-24-0-x-4

Seal Plate: No Catalog Ref.: 6.050.1, 4.019.1
 Max Flow: 15 gpm

Bleed Off P.C. Flow Regulator & Relief on A
Side B Model No. RV10-22A-0-x-35/xx

Side Up: 2 Plug: None
 Block No.: 7170810 Plug Side: n/a
 Note: Relief is not pre-set. Reverse cartridges for relief on B

FRR10-20F-S03A-x-xx/xx
Side A Model No. FR10-20F-S03C-x-xx

Seal Plate: No Catalog Ref.: 6.050.1, 5.301.1
 Max Preset Flow: 6 gpm (FR)

Relief & Anti-Cavity Flow Control on A
Side B Model No. RV10-22x-x-xx/xxxx

Side Up: 2 Plug: None
 Block No.: 7170810 Plug Side: A
 Note: Relief is not pre-set. Reverse cartridges for relief on B

RAC10-22x-S03A-x-xx/xx
Side A Model No. FC10-21D-0-x

Seal Plate: No Catalog Ref.: 6.050.1, 5.212.1
 Max Flow: 15 gpm

Relief & Flow Control on A **RFC10-22x-S03A-x-xx/xx**
Side B Model No. RV10-22x-x-xx/xxxx

Side Up: 2 Plug: None
 Block No.: 7170810 Plug Side: A
 Note: Relief is not pre-set. Reverse cartridges for relief on B

Side A Model No. NV10-20D-0-x

Seal Plate: No Catalog Ref.: 6.050.1, 5.012.1
 Max Preset Flow: 6 gpm (FR)

ISO/CETOP 3 Manifold